



July 8, 2009

CG25309.B

Alberta Transportation
2nd Floor, 803 Manning Road NE
Calgary, AB T2E 7M8

Attn: Mr. Ross Dickson

**Re: Southern Region Geohazard Assessment Program
Highway 742:02 Avalanche Areas
2009 Annual Inspection Report**

This letter documents the 2009 annual site inspection of the avalanche areas along Highway 742:02, southbound of Canmore, AB.

AMEC Earth & Environmental (AMEC), a division of AMEC Americas Limited, performed this inspection in partial fulfillment of the scope of work for the supply of geotechnical services for Alberta Transportation's (AT's) Southern Region (AT Consulting Services Agreement CE061/08).

The site inspection was performed on June 11, 2009 by Mr. Andrew Bidwell, P.Eng. and Mr. Bryan Bale, EIT of AMEC in the company of Mr. Ross Dickson and Mr. Neil Kjelland, P.Eng. of AT along with Mr. George Field, Public Safety Specialist for Kananaskis Country with the Parks Division of Alberta Tourism, Parks and Recreation.

BACKGROUND

During the 2007/2008 geohazards review of the Highway 742 corridor three areas signed as "Avalanche Area, No Stopping" were noted along the highway:

- "East End Of Rundle" avalanche area, approximately 4.8 to 6.0 km southbound from the junction between Highway 742 and Three Sisters Parkway in Canmore, AB. This area was referred to as the "Km 4.8 to Km 6.0 Snow Avalanche Area" in the corridor review report.
- "Back Of Big Sister" avalanche area, a short distance southbound of the Three Sisters Dam. This area was referred to as the "Snow Avalanche Area South Of Three Sisters Dam – Km 16.3 To 17.4" in the corridor review report.

P:\Projects\Calgary Geo\CG25309 - AT Southern Region 2009\600 Reports\Annual 2009\Hwy 742 avalanche\Hwy 742 avalanche 2009.doc

AMEC Earth & Environmental
A division of AMEC Americas Limited
140 Quarry Park Blvd SE
Calgary, AB, CANADA T2C 3G3
Tel +1 (403) 248-4331
Fax +1 (403) 248-2188

www.amec.com

- “Buller Corner” avalanche area, approximately 28.9 to 32.1 km southbound from the junction between Highway 742 and Three Sisters Parkway in Canmore, AB.

Figure 1, attached, illustrates the location of these areas along the Highway 742 corridor.

Figures 2 to 4, attached, show oblique aerial views of each site with the approximate location of the avalanche source and runout zones relative to the highway.

Please refer to the report on the Highway 742 corridor review¹ for background information on each site.

JUNE 2009 FIELD REVIEW OF AVALANCHE AREAS

The June 11, 2009 field review of the avalanche areas was performed as follows:

- The AT and AMEC personnel met with Mr. George Field (Parks Division) at the parking lot of the Canmore Nordic Centre at the north end of Highway 742 to discuss:
 - The avalanche conditions at the sites and the impacts to the highway corridor over the past couple of decades.
 - The scope, logistics and typical costs of the avalanche control work performed in recent years by the Parks Division.
 - The advantages and disadvantages of other possible avalanche control measures for these sites.
- The East End Of Rundle and Back Of Big Sister avalanche areas were visually reviewed from the highway after the meeting, with further discussion and exchange of information between AT, AMEC and the Parks Division.

The following subsections summarize the information discussed regarding each of the avalanche areas.

¹ AMEC report “Geohazards Review, Highway 742 and Highway 940 Corridors, Southwestern Alberta”, submitted to AT on April 8, 2009, AT Consulting Services Agreement CE044/04, AMEC project number CG25262.

General Information

Parks Division personnel assess the avalanche conditions in these three areas as an extension of their avalanche forecasting and control work for the Kananaskis Country. The training and experience of the Parks Division team in avalanche forecasting, mapping and control work generally exceeds the requirements for managing avalanche safety programs for highway operations as listed for the Qualified Avalanche Planner (QAP) designation proposed by the Canadian Avalanche Association (CAA). However, it is understood that the more junior members of the Parks Division team would require formal training for specific items listed in the requirements for the QAP designation if their previous training and ongoing experience working under the supervision and direction of more experienced personnel cannot be recognized relative to the QAP designation.

“East End Of Rundle” Avalanche Area

- There is an avalanche hazard along the highway from the steep slopes on the east end of Mount Rundle. Of note, this area was also the site of the February 1991 incident where a vehicle parked within the signed avalanche hazard area was swept from the highway by a naturally occurring avalanche (please refer to the April 2009 Highway 742 corridor geohazard review report for further details).
- The approximate location of the avalanche source zones and runout paths above the highway are shown on Figure 2, attached.
- The Parks Division personnel assess the avalanche hazard in this area based on visual reviews of the snowpack conditions on the slopes above the highway, supplemented with temperature and wind data from a weather station near the summit of the east end of Mount Rundle that is operated by the Parks Division. It was noted that this weather station does not have the capability to measure snowfall, but that the addition of a precipitation/snowfall gauge to the existing weather station would almost certainly not provide representative data for the avalanche source areas that are subject to highly localized wind-borne snow accumulation.
- When judged necessary to reduce the avalanche hazard to the highway, the Parks Division has performed avalanche control work in this area as follows:
 - Contact the highway maintenance contractor to:
 - Arrange for equipment to clear snow from the highway. When possible, the snow clearing equipment is pre-positioned at the Whiteman’s Gap (uphill) end of the highway through the avalanche area so that it can work in a downhill direction to more efficiently clear avalanche deposits from the road.

- Temporarily close this segment of Highway 742 using the gates at the Grassi Lakes turnoff a short distance northbound of the Canmore Nordic Centre and North Whiteman's Dam.
- Tow any parked vehicles from the closed segment of the highway prior to avalanche control work.
- Parks Division personnel use a contracted helicopter to "heli-bomb" the avalanche source zones, i.e. fly over the avalanche source zones and drop explosive charges in order to trigger avalanches.
- The location and extent of runout from the triggered avalanches and the remaining snowpack in the source zones are visually reviewed in order to determine if conditions are safe for snow clearing equipment to work along the highway.
- Avalanche deposits on the highway are cleared and any guardrail damage is repaired, prior to the highway reopening to traffic.
- It has been found that the time required before reopening the highway after heli-bombing varies widely, from less than an hour for situations where the runout from triggered avalanches does not extend onto the highway to most of a day when significant amounts of snow and debris are deposited on the highway and need to be cleared. There is sometimes also guardrail damage that needs to be repaired.
- On rare occasions this segment of the highway is closed for up to two days or longer because extremely strong, gusty winds and/or visibility conditions have prevented helicopter overflights and heli-bombing of the avalanche source zones during times when the avalanche hazard is considered too high for the highway to remain open without avalanche control work being performed. This is understood to have occurred on two occasions in the past 25 years.
- The southern end of Highway 742 can be accessed via Highway 40 when this segment of the highway is closed due to the avalanche hazard. The Parks Division personnel report that traffic on the highway is generally from outdoor recreational users, industrial users (e.g. TransAlta Corporation, to access their dam sites and facilities in the Spray Reservoir area) and commercial users (e.g. guides and outfitters). It is understood from the Parks Division personnel that the users of the highway have generally been tolerant of the frequency and duration of temporary highway closures in recent years, with the exception of a single, Canmore based commercial user of the highway that objects strongly to closures lasting more than one day.

- From 2001 to 2009, the number of heli-bombing missions per avalanche season has varied from zero to four, depending on the snow conditions during any given season. Please refer to the attached “Yearly Costs Of Helicopter Control Missions 2001-09” provided by the Parks Division for a summary.
- The ballpark cost for each heli-bombing trip is roughly \$3,000, based on typical hourly rates for the contracted helicopter and the cost of the explosive charges that are used. The annual cost depends on the number of missions required during each avalanche season, and from 2001 to 2009 the annual costs varied from \$0 to approximately \$13,000. Please refer to the attached “Yearly Costs Of Helicopter Control Missions 2001-09” provided by the Parks Division for further details. These costs are borne by the Parks Division, along with their personnel time and CAA training/certification for the personnel. There are also ongoing costs incurred by the Parks Division for the licensing, operation and maintenance of a secure storage facility for the explosive charges.
- The Parks Division personnel have noted that an additional 1 to 2 heli-bombing missions per year in order to perform “pre-avalanche control” work would typically have been appropriate in recent years. These missions would have triggered avalanches earlier in the natural avalanche cycle that would stop above the highway. This would reduce snow buildup prior to the development of an unstable snowpack that could later release avalanches that would reach the highway. This would maintain a relatively lower avalanche hazard throughout each avalanche cycle and also reduce the number of temporary closures required if avalanche control work was only performed later in each avalanche cycle, resulting in larger triggered avalanches reaching the highway and require clearing.
- The Parks Division personnel reported that members of the public have speculated that the use of explosive charges in the avalanche control work will lead to an increased number and magnitude of rockfalls from the upper slopes above the highway over time. Few rockfalls from the upper slopes appear to reach the highway, however on one occasion in 2006 a rockfall originating from the uppermost slopes above the highway deposited numerous boulder-sized rocks onto the highway. Please refer to the inspection report with respect to rockfall along this segment of Highway 742 for further information regarding the rockfall hazard².

² Upcoming AMEC report “Southern Region Geohazard Assessment Program, Highway 742:02 Rockfall Areas, Between ~Km 4.8 and 6.1, June 2009 Inspection Report”, AT Consulting Services Agreement CE061/08, AMEC project number CG25309.B.

“Back Of Big Sister” Avalanche Area

There is an avalanche hazard along the highway from the steep lower slopes on the west/southwest side of the “Big Sister” mountain, a short distance southbound from the Three Sisters Dam. The approximate location of the avalanche source zones and runout paths above the highway are shown on Figure 3, attached.

It is understood from the Parks Division that the avalanche hazard at this site is relatively low for most of each winter season because there is typically relatively little snow accumulation in the avalanche source zones in the treed area upslope of the highway. However, under certain conditions more significant and unstable snowpacks can develop and the avalanche hazard increases correspondingly. This can occur as a result of moist snowfalls that “stick” to the slope rather than more typical drier winter snow that is prone to being blown off the slope by the prevailing winds in this area. Suitably moist snowfalls with winds favourable for snowpack accumulation in the source zones can occur during upslope storm events and/or in the spring of each year. As a result, the segment of the highway below the avalanche runout zones has been temporarily closed on occasion every few years but typically not every year. The frequency and duration of closures varies depending on weather and snowpack conditions. The avalanche hazard conditions are evaluated daily during each season by the Parks Division personnel.

As described in the April 2009 Highway 742 corridor geohazard review report, the runout from an avalanche at this site is known to have crossed the highway on at least one occasion in recent years. Furthermore, it is understood that heli-bombing avalanche control measures have been applied at this site on one occasion in the past.

“Buller Corner” Avalanche Area

There is an avalanche hazard to the highway from the west/northwest slopes of Mount Buller. The approximate location of the avalanche source zones and runout paths above the highway are shown on Figure 4, attached.

This site was not reviewed in the field on June 11, 2009.

It is understood from the Parks Division that this area typically produces avalanches throughout each winter season, and in the last approximately 20 years avalanche runout has come close to the highway on occasion but has not reached the road surface. However, the potential for future avalanche runout to reach the highway cannot be entirely ruled out. It is also understood that heli-bombing avalanche control measures have been applied at this site on one occasion in the past.

ASSESSMENT

General

There is an avalanche hazard to the highway at all three of the sites. The risk to motorists is only partially mitigated by the “Avalanche Area – Do Not Stop” signage in place along the highway at each site. However, it is known that motorists do stop and park in these areas at times during avalanche season. This has been illustrated by the February 1991 incident where a parked vehicle was swept from the highway in the “East End Of Rundle” avalanche area. Furthermore, the Parks Division reports that they occasionally note vehicles parked in the signed avalanche hazard areas.

“East End Of Rundle” Avalanche Area

This area is by far the most active of the three avalanche areas and poses the greatest hazard to the highway. The Parks Division performs avalanche control work in this area as described in the previous section. The heli-bombing avalanche control work is practical for this site provided that the temporary closures of the highway are acceptable to AT. Other avalanche control options for this site include:

- “Gaz-EX” style remotely operated avalanche triggering devices installed throughout the avalanche source zones. These devices explode an oxygen/propane gas mixture in tubes that direct the explosive force onto the snowpack surface in the source zones, thus triggering avalanches without the need for a helicopter overflight to drop explosive charges³. Aside from annual refilling of the gas storage tanks installed above the avalanche source zones along with annual inspection/maintenance of the equipment (this can be done during the summer months), the “Gaz-EX” devices can be operated remotely during any weather and daylight conditions. This option could be effective at this site if the devices could be installed close enough to the avalanche source zones, however such installations and subsequent maintenance would be technically challenging and expensive due to the steep rocky terrain that would require helicopter access. Furthermore, the installations would likely be visible from Canmore, AB and be considered unsightly.
- “Daisybell” style compressed gas device to trigger avalanches⁴. These devices are essentially helicopter borne versions of “Gaz-EX” devices, carried below the helicopter on a long sling-line and triggered from the helicopter cockpit while hovering over the

³ Please refer to the manufacturer’s website, <http://tas.groupemnd.com/en/gazex/gazex.html>, for further information regarding this product.

⁴ Please refer to the manufacturer’s website, <http://tas.groupemnd.com/en/daisybell/daisybell.html>, for further information regarding this product.

avalanche source zone. These devices offer the advantage of not having to establish and maintain permanent “Gaz-EX” installations around the avalanche source zones. However, their use is subject to the ability of a helicopter to safely hover over the avalanche source zones with a long sling-line used to carry the “Daisybell”. Given the high, gusty winds often encountered at this site, this would be even more challenging than heli-bombing and likely impractical to unsafe for the helicopter at times.

- Explosive charges delivered via permanently installed winch lines between the highway and the avalanche source zones – high installation and maintenance costs given that the source zones are up to roughly 700 vertical metres above the highway. These installations would likely also be visually unappealing to residents in Canmore.
- Explosive charges delivered via an artillery device installed in the valley below the avalanche source areas. This could be an effective way around the limitations of helicopter overflights for heli-bombing. However, because the upper avalanche source zones are only a short distance below the summit ridgeline of the east end of Mount Rundle, shells fired from the valley below could very easily overshoot the summit and land on the far side of Mound Rundle or even the Goat Creek/Spray River valley further beyond.
- Passive avalanche control measures to deter the accumulation of an unstable snowpack in the avalanche source zones. Such measures would consist of snow redistribution structures (avalanche snow bridges). The installation and maintenance of such structures would be very expensive given the locations of the source zones in the very steep, rock slope terrain across the upper slopes of Mount Rundle. Furthermore, the permanent installations would likely also be considered unsightly by residents of Canmore.
- Snow nets installed along the avalanche paths upslope of the highway to retain avalanches and prevent them from reaching the highway. Such nets are essentially dynamic rockfall barrier nets similar to the one installed along Highway 3 at Crowsnest Lake but configured to retain avalanching snow. Considering the length of runout path and the expected volume and velocity of avalanche runout that would impact the highway, such nets are judged impractical for this area. Even if they were practical, the snow accumulated behind the nets would need to be cleaned after each avalanche event in order to maintain their capacity, which would be far more difficult, time consuming and costly to do than plowing the highway after avalanches are triggered by heli-bombing.
- Avalanche sheds – the avalanche risk to the highway could be virtually eliminated by constructing and maintaining avalanche sheds at locations where avalanche paths cross the highway. However, this would not be a cost-effective use of resources unless

performed as part of an overall upgrade of the existing highway to a two lane design standard.

The heli-bombing avalanche control work is judged to be the most suitable option for this site. It is also considered to be by far the most cost-effective, given that the ballpark cost per season has been in the order of \$13,000 per year or less from 2001 to 2009 (not including the associated cost for the maintenance contractor to plow the highway after avalanches are triggered).

Another item to consider is that the potential for avalanche runout onto the highway below the point-release avalanche area on the treed slope at the south end of the overall area may increase in the future if the tree cover is reduced due to pine beetle infestation, forest fire or other issues. The heli-bombing avalanche control may need to be extended into this area if this occurs and/or passive avalanche control measures (e.g. avalanche snow bridges) may become worthwhile in this area in the future. This can be assessed in future years.

“Back Of Big Sister” Avalanche Area

This avalanche area is reported to be the least active of the three avalanche areas posing a hazard to the highway. However, monitoring of the snowpack conditions in this area by the Parks Division personnel along with heli-bombing avalanche control if required is warranted in this area. Alternative avalanche control measures are not considered worthwhile.

If the tree cover on this slope is reduced due to pine beetle infestation, forest fire or other issues, then the potential for avalanche runout onto the highway may increase. This may increase the need for avalanche control measures in this area. This can be assessed in future years.

“Buller Corner” Avalanche Area

This area is reported to be the second-most active avalanche area among the three sites, typically producing avalanches throughout each winter season but with the avalanche runout rarely reaching the highway.

If the tree cover on this slope is reduced due to pine beetle infestation, forest fire or other issues, then the potential for avalanche runout onto the highway may increase. This may increase the need for avalanche control measures in this area. This can be assessed in future years.

RISK LEVEL

“East End Of Rundle” Avalanche Area

The recommended Risk Level with respect to avalanches along this segment of the highway, based on AT’s snow avalanche risk matrix (copy attached), is described below.

- Probability Factor of 13 because it appears that multiple avalanches occur in a typical year. This does not consider the artificial triggering of avalanches during the control work, i.e. it is judged that multiple avalanches would occur naturally if the avalanche control work were not performed. A Probability Factor of 13 is judged appropriate, being between a value of 11 (corresponding to “one or two” avalanches each year) and 15 (corresponding to “frequent” avalanches each year). This is the same value of Probability Factor that was recommended in the April 2009 corridor geohazard review report.
- Consequence Factor of 2 contingent upon effective, timely avalanche control work along this segment of the highway. This value of Consequence Factor corresponds to “negligible, if any, snow deposited on the road surface by avalanches. Can be cleared during routine snowplowing of the road”, i.e. it relies on the avalanche control work to prevent natural avalanches from running out across the road while the highway is open to traffic.

Therefore, the recommended Risk Level for this site is 26, contingent upon the continuation of effective, timely avalanche control work along this segment of the highway. If this cannot be relied upon, then the Consequence Factor would be increased to 6, and therefore a Risk Level of 78, because naturally occurring and artificially triggered avalanches are known to run across the road and vehicles struck by such avalanches could be fully buried and possibly swept off the road (as illustrated by the February 1991 incident).

“Back Of Big Sister” Avalanche Area

The recommended Risk Level for this segment of the highway, based on AT’s snow avalanche risk matrix, is as follows:

- Probability Factor of 7 because there is a record of an avalanche extending across the highway on at least one occasion, however such avalanches are not probable each year based on the available information. As noted earlier, there is usually relatively little snow accumulation in the avalanche source zones at this site and the avalanche hazard is correspondingly low, however at times during each winter a larger, unstable snowpack does accumulate.

- Consequence Factor of 2 contingent upon continued assessment of the avalanche conditions by the Parks Division and proactive road closure as required. This value of Consequence Factor corresponds to “negligible, if any, snow deposited on the road surface by avalanches. Can be cleared during routine snowplowing of the road”.

Therefore, the recommended Risk Level for this site is 14, contingent upon continued assessment of the avalanche conditions by the Parks Division and proactive road closure as required. If this cannot be relied upon, then the Consequence Factor would be increased to 6, and therefore a Risk Level of 42, because naturally occurring avalanches are known to have run across the highway on at least one occasion in recent years and vehicles struck by such avalanches could be fully buried and possibly swept off the road.

“Buller Corner” Avalanche Area

The recommended Risk Level for this segment of the highway, based on AT’s snow avalanche risk matrix, is as follows:

- Probability Factor of 7 because the avalanche paths extending across the highway are not active each year but at least one avalanche has reached the ditch in recent years.
- Consequence Factor of 3, which is likely slightly conservative based on the single report of an avalanche reaching the upslope highway ditch but not spilling onto the road surface. This value for the Consequence Factor is intermediate between:
 - A value of 2 that would be associated with negligible amounts of snow deposited on the road, and
 - A value of 4 that would be associated with closure of the road while heavy equipment clears snow from the road surface and also the possibility for vehicles on the highway to be at least partially buried but likely not swept off the highway.

Therefore, the recommended Risk Level for this site is 21. This Risk Level does not account for any mitigative measures, such as temporary road closure when judged to be warranted due to avalanche conditions or heli-bombing to trigger avalanching of an unstable snow pack. It is understood that such measures are not routinely applied at this site (aside from one heli-bombing occasion in the past).

RECOMMENDATIONS

The following is recommended for these avalanche areas:

1. **It is recommended that the Parks Division continue with the monitoring of avalanche conditions and avalanche control work as required for these three areas.** The use of other avalanche control measures to supplement or replace the heli-bombing avalanche control work is not recommended. As described in the "Assessment" section, the other possible avalanche control measures are assessed to be less practical and/or less cost-effective than continuing with the heli-bombing by the Parks Division as required, provided that AT can accept the consequence of temporary closures of the highway through the "East End Of Rundle" area pending heli-bombing and snow clearing from the road.

This approach would also continue to draw upon the Parks Division personnel's avalanche control expertise and long-standing first-hand experience with these sites, which would be significantly more cost-effective than contracting out the avalanche forecasting and control work to an outside consultant.

2. As discussed during the meeting on June 11, 2009, it is understood that the costs for the avalanche control work at the "East End Of Rundle" area are currently borne by the Parks Division. However, because this work is not officially within the scope of the Parks Division these expenditures create pressure on their annual budget and as a result the heli-bombing is occasionally not performed as frequently as would be likely be assessed as necessary under the CAA recommendations for managing avalanche safety for highway operations. **Therefore, as discussed during the meeting on June 11, 2009, if AT is able to commit annual funding towards the avalanche control work that would be a significant supplement towards the total annual costs for the avalanche control work.** For example, approximately \$10,000 per season would be sufficient for approximately 2 to 3 additional heli-bombing missions to perform "pre-avalanche control" work in order to maintain a lower risk to the highway and reduce the number of temporary closures per season. It is judged that this would be a very cost-effective use of resources to manage the avalanche risk to the highway and to minimize the frequency and duration of temporary highway closures due to the avalanche hazard. This does not take into account the costs for the maintenance contractor to clear the snow from the highway (along with guardrail repairs if necessary) after avalanche control work. It is understood that these costs are covered within the existing highway maintenance contract, but the particulars of this are not known to AMEC.
3. **Project site data binders should be established for the three avalanche areas.** This would be consistent with other sites that are monitored as part of AT's Geohazard Risk Management Program (GRMP) and would collect all of the documentation on the geohazard assessment and control work for each site.

4. **The annual site inspections by AT and AMEC personnel should be discontinued and replaced with an annual report (either by the Parks Division or AT with input from the Parks Division) documenting and summarizing the previous winter's avalanche control work.** This report should be prepared by the Parks Division or AT with input from the Parks Division. Such reports would allow for evaluation of the costs and cost-effectiveness of the control work relative to other avalanche control options in the future.

5. **The potential for increased rockfall from the upper slopes above the highway due to the use of explosive charges in the avalanche control work and the associated risk to the highway should be assessed.** This could be done with measurements of the vibrations induced into the underlying rock slopes by the explosive charges and some form of assessment of associated "loosening" of the rock slope beyond naturally occurring erosion and weathering.

Upgrading the existing weather station near the avalanche source zones at the "East End Of Rundle" or installing a new weather station closer to the source zones to measure snowfall/precipitation is not recommended. The cost to install and maintain the equipment in this helicopter-accessible area would not be worth the value of the data, i.e. such data is not expected to provide a basis to modify the timing or frequency of heli-bombing.

CLOSURE

This report has been prepared for the exclusive use of Alberta Transportation for the specific project described herein. Any use which a third party makes of this report, or any reliance on or decisions to be made based on it are the responsibility of such third parties. AMEC Earth & Environmental, a division of AMEC Americas Limited, cannot accept responsibility for such damages, if any, suffered by any third party as a result of decisions made or actions based on this report. This report has been prepared in accordance with accepted geotechnical engineering practices. No other warranty, expressed or implied, is made.

We trust that this meets your needs at this time. Please contact the undersigned if you have any questions or require any further information.

Respectfully Submitted,

**AMEC Earth & Environmental,
a division of AMEC Americas Limited**

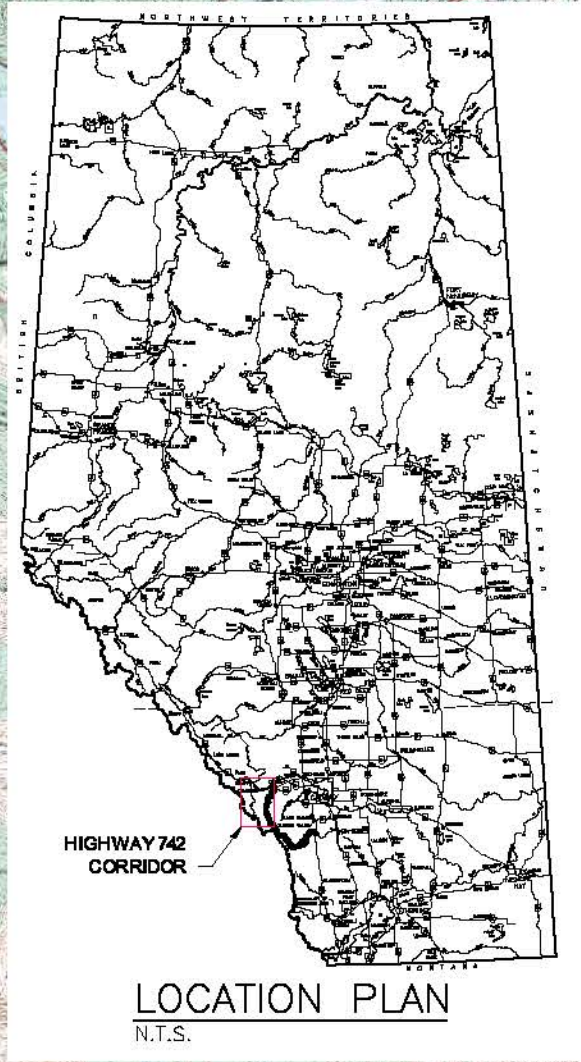
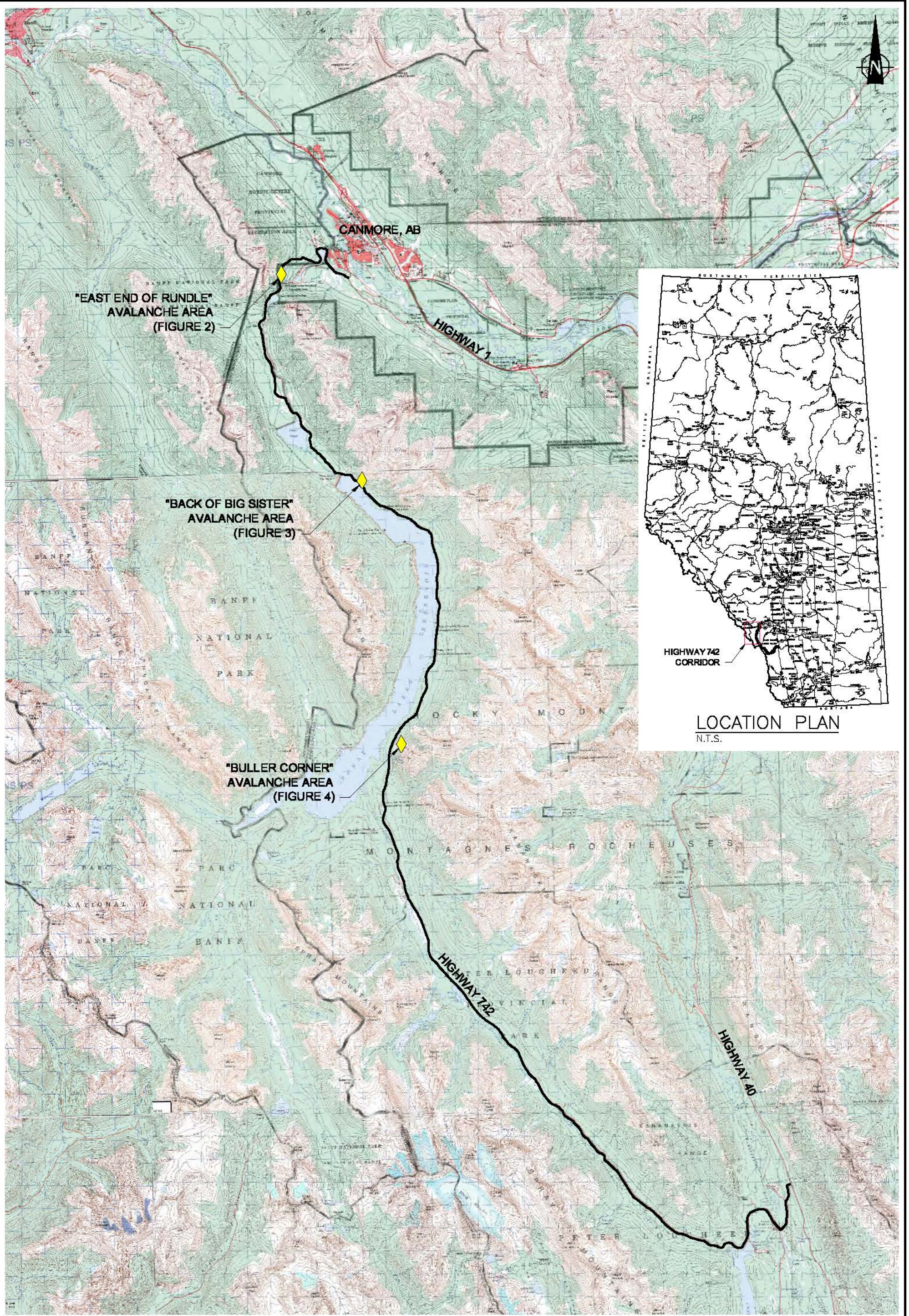
Andrew Bidwell, M.Eng., P.Eng.
Associate Geological Engineer

APEGGA Permit to Practice No. P-04546

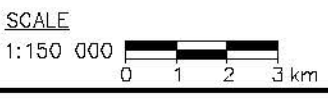
Reviewed by:

Pete Barlow, M.Sc., P.Eng.
Principal Geotechnical Engineer

Attachments: Figures 1 to 4
"Yearly Costs Of Helicopter Control Missions 2001-09"
AT Snow Avalanche Risk Matrix



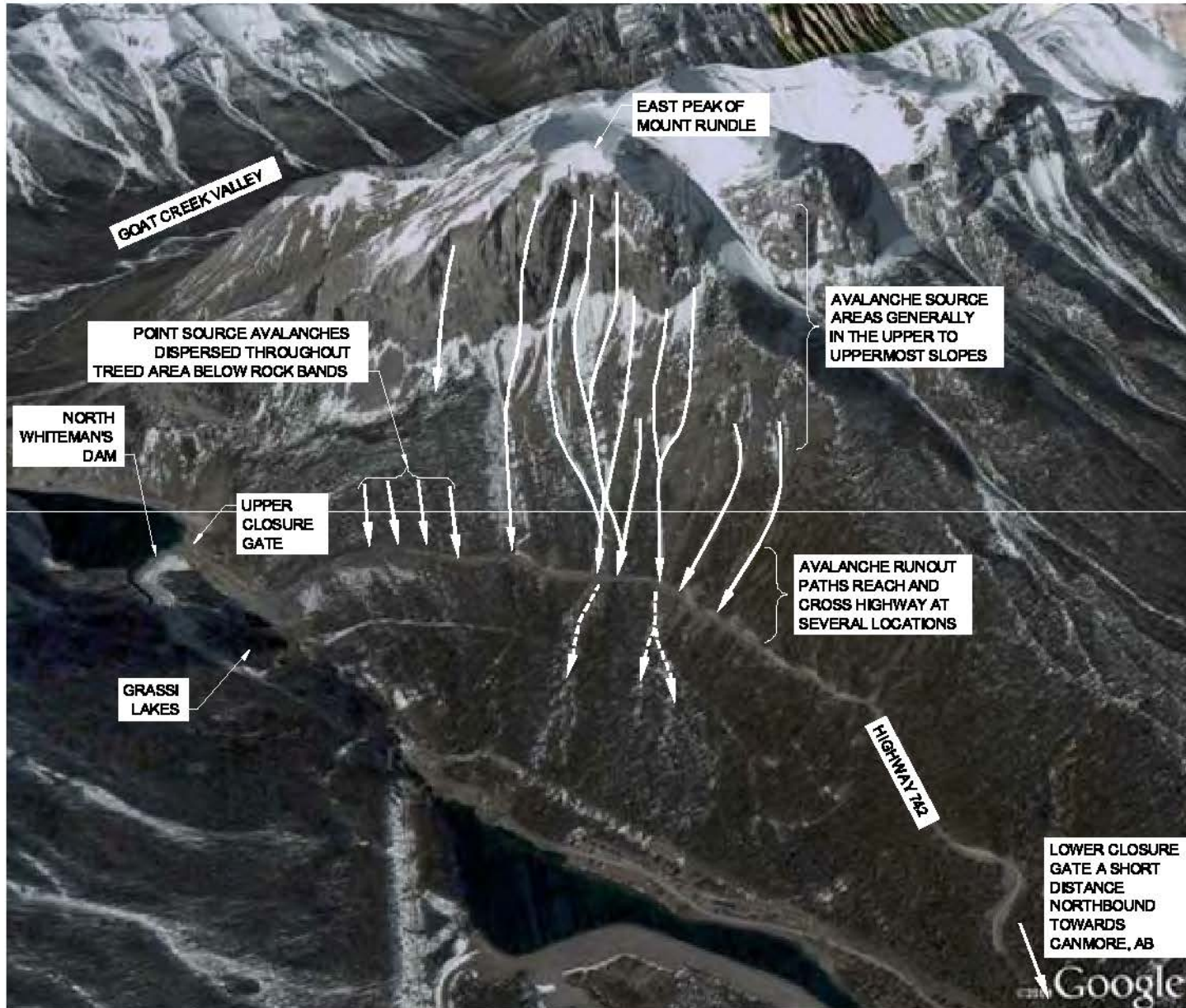
MAP REFERENCE: 1:50 000, 82-J/10,11,
14, 82-O/3 (ETOPO)



amec Earth & Environmental

CLIENT: **Alberta** Transportation

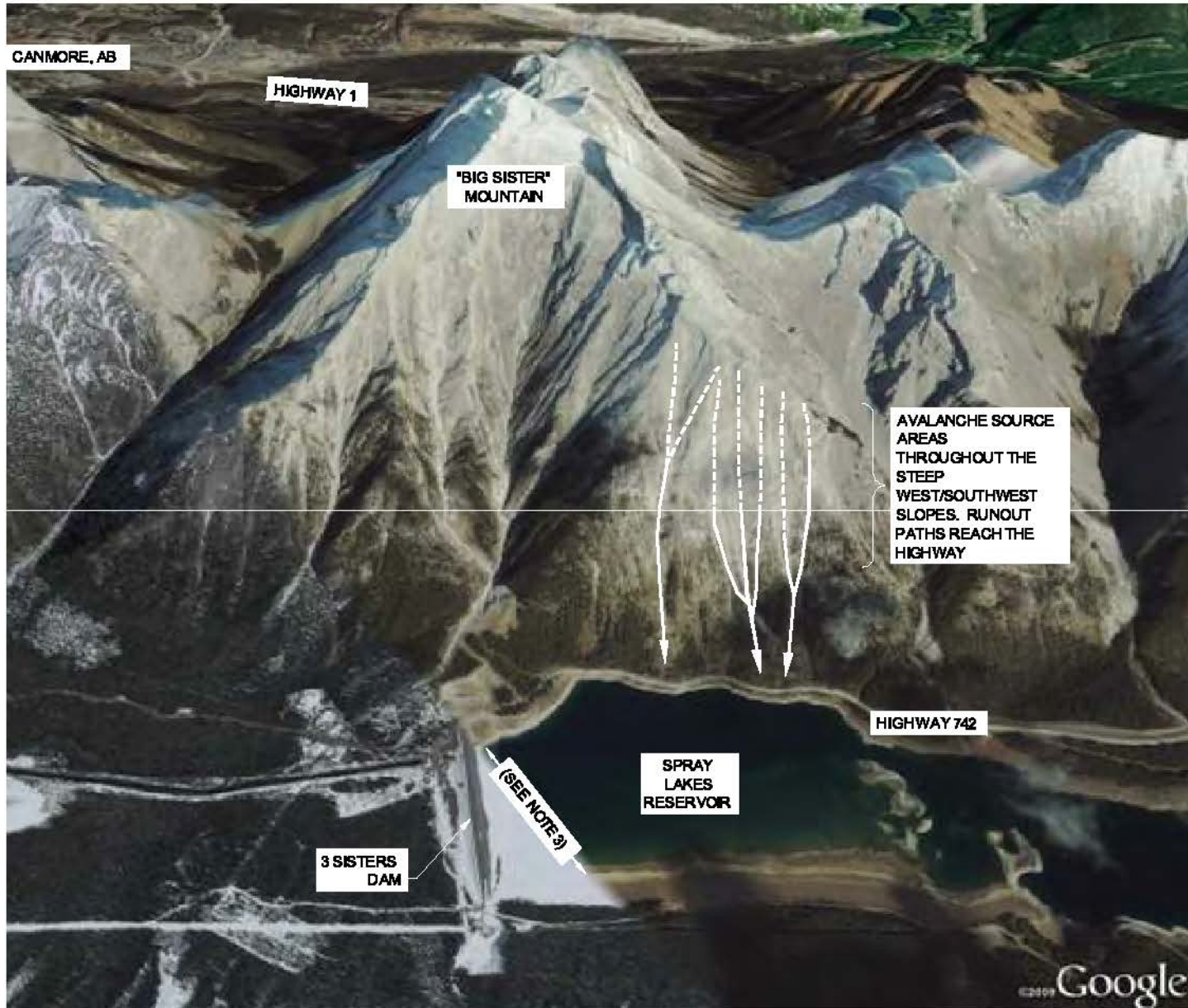
PROJECT: SOUTHERN REGION GEOHAZARD ASSESSMENT				
TITLE: HIGHWAY 742 CORRIDOR SNOW AVALANCHE AREAS				
DATE: JUNE 2009	JOB No.: CG25309.B	CAD FILE: 25309N14.dwg	FIGURE No.: FIGURE 1	REV. A



NOTES:

1. IMAGE FROM GOOGLE EARTH.
2. FACING WEST.
3. AVALANCHE PATHS AS SHOWN ARE APPROXIMATE. ACTUAL LOCATIONS DEPEND ON SNOWPACK CONDITIONS THROUGHOUT EACH WINTER SEASON.

	PROJECT: SOUTHERN REGION GEOHAZARD ASSESSMENT				
	TITLE: "EAST END OF RUNDLE" AVALANCHE AREA OBLIQUE VIEW SHOWING AVALANCHE PATHS				
CLIENT:			DATE: JUNE 2009	JOB No.: CG25309.B	CAD FILE: 25309N15.dwg
				FIGURE No.: FIGURE 2	REV. A



TO CANMORE, AB
←

AVALANCHE SOURCE AREAS THROUGHOUT THE STEEP WEST/SOUTHWEST SLOPES. RUNOUT PATHS REACH THE HIGHWAY

(SEE NOTE 3)

NOTES:

1. IMAGE FROM GOOGLE EARTH.
2. FACING NORTHEAST.
3. APPARENT STRAIGHT BOUNDARY BETWEEN SNOW COVERED AND NON-SNOW COVERED AREAS DUE TO COMPILATION OF SATELLITE PHOTOS FROM DIFFERENT DATES.
4. AVALANCHE PATHS AS SHOWN ARE APPROXIMATE. ACTUAL LOCATIONS DEPEND ON SNOWPACK CONDITIONS THROUGHOUT EACH WINTER SEASON.

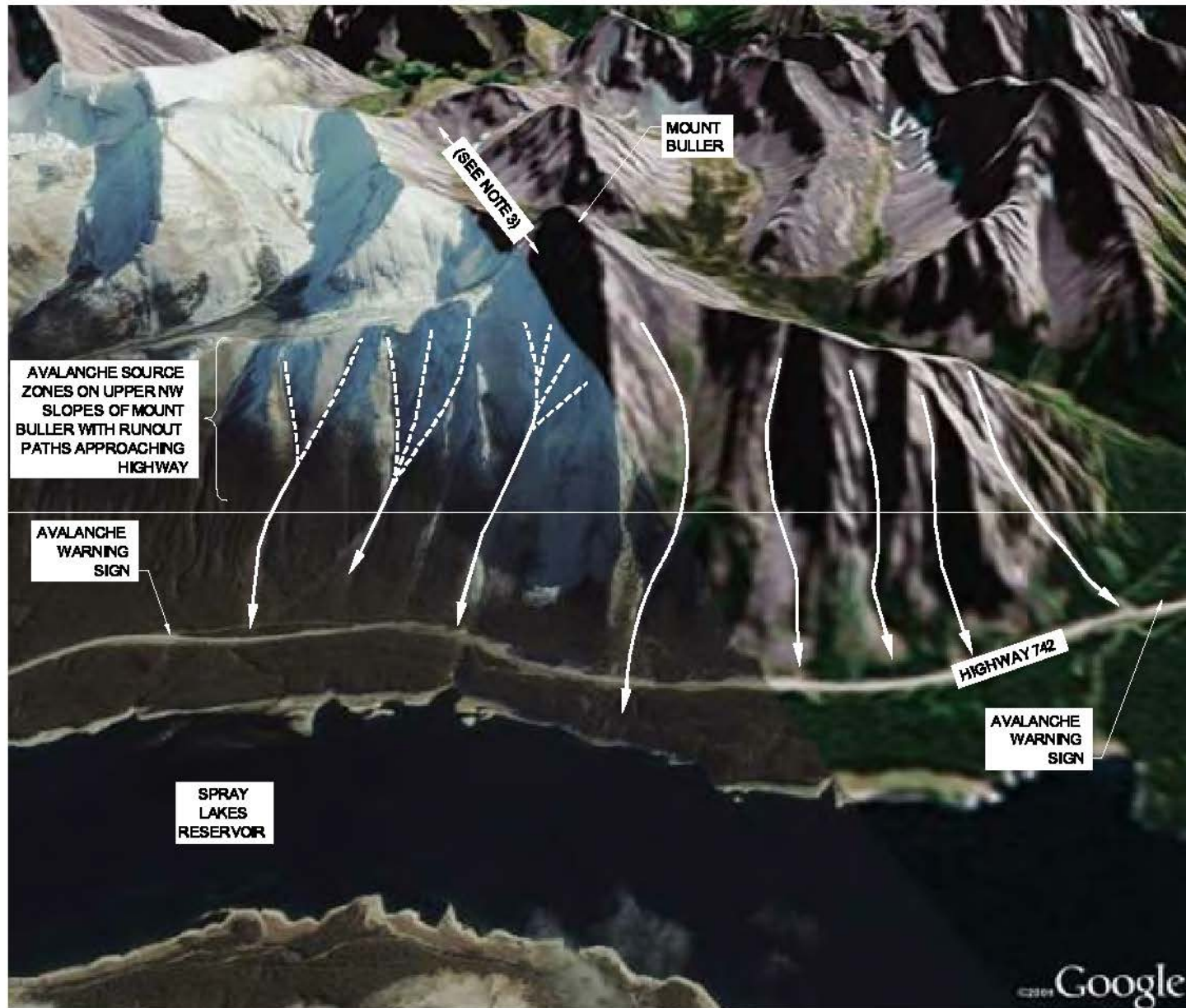
amec Earth & Environmental

CLIENT: **Alberta** Transportation

PROJECT: **SOUTHERN REGION GEOHAZARD ASSESSMENT**



TITLE: **"BACK OF BIG SISTER" AVALANCHE AREA
OBLIQUE VIEW SHOWING AVALANCHE PATHS**

DATE: JUNE 2009	JOB No.: CG25309.B	CAD FILE: 25309N15.dwg	FIGURE No.: FIGURE 3	REV. A
-----------------	--------------------	------------------------	----------------------	--------



NOTES:

1. IMAGE FROM GOOGLE EARTH.
2. FACING EAST.
3. APPARENT STRAIGHT BOUNDARY BETWEEN SNOW COVERED AND NON-SNOW COVERED AREAS DUE TO COMPILATION OF SATELLITE PHOTOS FROM DIFFERENT DATES.
4. AVALANCHE PATHS AS SHOWN ARE APPROXIMATE. ACTUAL LOCATIONS DEPEND ON SNOWPACK CONDITIONS THROUGHOUT EACH WINTER SEASON.

	PROJECT: SOUTHERN REGION GEOHAZARD ASSESSMENT				
	TITLE: "BULLER CORNER" AVALANCHE AREA OBLIQUE VIEW SHOWING AVALANCHE PATHS				
CLIENT: 	DATE: JUNE 2009	JOB No.: CG25309.B	CAD FILE: 25309N15.dwg	FIGURE No.: FIGURE 4	REV. A

Highway 742 – “Buller Corner” Snow Avalanche Area – Km 28.9 To 32.1

This segment of the highway is signed as “Avalanche Area, No Stopping”. Avalanche paths on the northwest and west slopes of Mount Buller extend to the highway in this area. These avalanche paths may cross the highway, however this is not certain based upon their appearance on the airphotos and during the field review.

Personnel from Alberta Parks, Tourism and Recreation (Parks Division, Kananaskis Country) report that:

- Avalanches with the potential to reach the highway occur relatively infrequently in this area.
- One avalanche in 2003 or 2004 in the northernmost avalanche path in this area produced an avalanche that reached the upslope highway ditch.
- Avalanche control measures have been applied at this site on one occasion in the past (the same “heli-bombing” of avalanche source zones as performed for the Km 4.8 to 6.0 segment of Highway 742).

The recommended Risk Level for this segment of the highway, based on AT’s snow avalanche risk matrix, is as follows:

- Probability Factor of 7 because the avalanche paths extending across the highway are not active each year but at least one avalanche has reached the ditch in recent years.
- Consequence Factor of 3, which is likely slightly conservative based on the single report of an avalanche reaching the upslope highway ditch but not spilling onto the road surface. This value for the Consequence Factor is intermediate between:
 - A value of 2 that would be associated with negligible amounts of snow deposited on the road, and
 - A value of 4 that would be associated with closure of the road while heavy equipment clears snow from the road surface and also the possibility for vehicles on the highway to be at least partially buried but likely not swept off the highway.

Therefore, the recommended Risk Level for this site is 21.

The recommendations for managing the avalanche risk at this site are the same as for the Km 16.3 to 17.4 site, and are re-stated below:

- Maintain the warning signage posted along the highway.
- Continue the current avalanche forecasting and control work by the Parks Division.
- Assess the avalanche hazard conditions at this site in order to determine if the current level of avalanche forecasting and control work is sufficient or if additional work is required. The assessment should be done in conjunction with the same assessment recommended for the Km 4.8 to 6.0 segment of the highway. The assessment should be in accordance with the Canadian Avalanche Association's recommended standard of practice for avalanche hazard identification and management for resource and transportation industries. This assessment should be done collaboratively between AT and the personnel performing the current avalanche forecasting and control work, and may also require the participation of a specialist consultant with suitable training and experience in assessing avalanche conditions (for example, the requirements for managing avalanche safety programs for highway operations as listed for the Qualified Avalanche Planner designation proposed by the Canadian Avalanche Association).