



**Photo 1 (top) – June 2009**

**Rocky Creek**

Facing downstream along the creek channel from the Highway 40 bridge. Note how the channel is well-entrenched in the alluvial fan deposits.



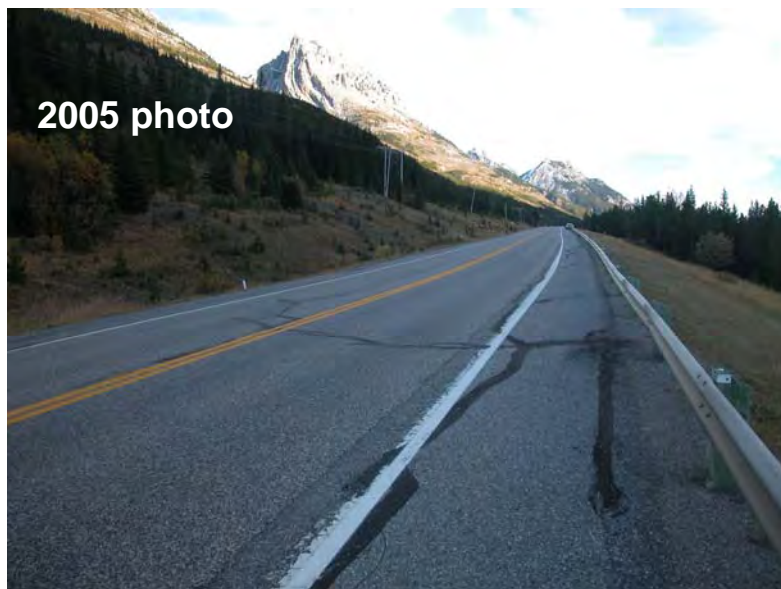
**Photo 2 (bottom) – June 2009**

**Rocky Creek**

Facing upstream along the creek channel from the Highway 40 bridge.



**Photo 3 (top) – June 2009**  
**Fortress Junction Road Cracking Site**  
Facing southbound across the settlement and cracking area in the southbound lane. The pattern of the cracking and downdrop is suggestive of slumping of a segment of the downslope lane, however when compared to Photo 4 from the 2005 inspection it does not appear that the damage to the road surface has worsened in recent years.



**Photo 4 (bottom) – 2005**  
**Fortress Junction Road Cracking Site**  
The same area as shown in Photo 3, as it appeared during the 2005 inspection.



**Photo 5 (top) – June 2009  
Hood Creek**

Facing downstream towards the culvert inlet with Highway 40 visible in the background. A large volume of debris was excavated from this “basin” upstream of the culvert in 2005. It appears that relatively little additional debris has accumulated in this area since that time.



**Photo 6 (bottom) – June 2009  
Hood Creek**

Closer view of the culvert inlet, which was clear of debris at the time of the June 2009 inspection. The inlet was approximately 50% blocked with debris at the time of the 2005 inspection, with the culvert pipe completely filled with debris a few metres in from the inlet.



**Photo 7 (top) – June 2009**

**Hood Creek**

Culvert outlet, which was approximately 1/3 blocked with debris at the time of the June 2009 inspection. The outlet was approximately 50% blocked with debris at the time of the 2005 inspection, with the culvert pipe completely filled with debris a few metres upstream from the outlet.