



**ALBERTA TRANSPORTATION  
PEACE REGION (PEACE RIVER / HIGH LEVEL)  
INSTRUMENTATION MONITORING RESULTS**

**FALL 2015**

**SECTION D  
DATA PRESENTATION**

**SITE PH47: HWY 690:02, DEADWOOD SLIDE**

ALBERTA TRANSPORTATION  
 PEACE REGION (PEACE RIVER / HIGH LEVEL)  
 INSTRUMENTATION MONITORING FIELD SUMMARY  
 FALL 2015

<b>Location:</b> PH47 Deadwood Slide <b>File Number:</b> 15-16-360 <b>Probe:</b> - <b>Cable:</b> -	<b>Readout:</b> RST VW #4 <b>Extension:</b> - <b>Temp:</b> 15 <b>Read by:</b> CMG/NKR
---	--

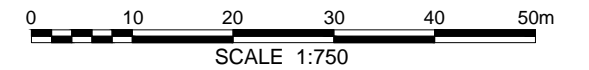
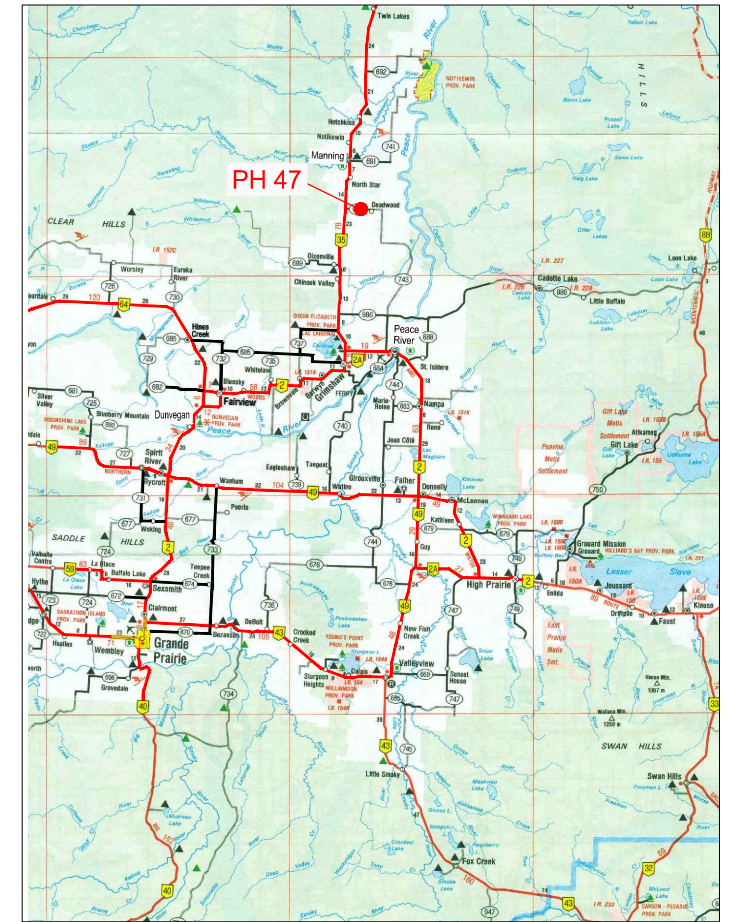
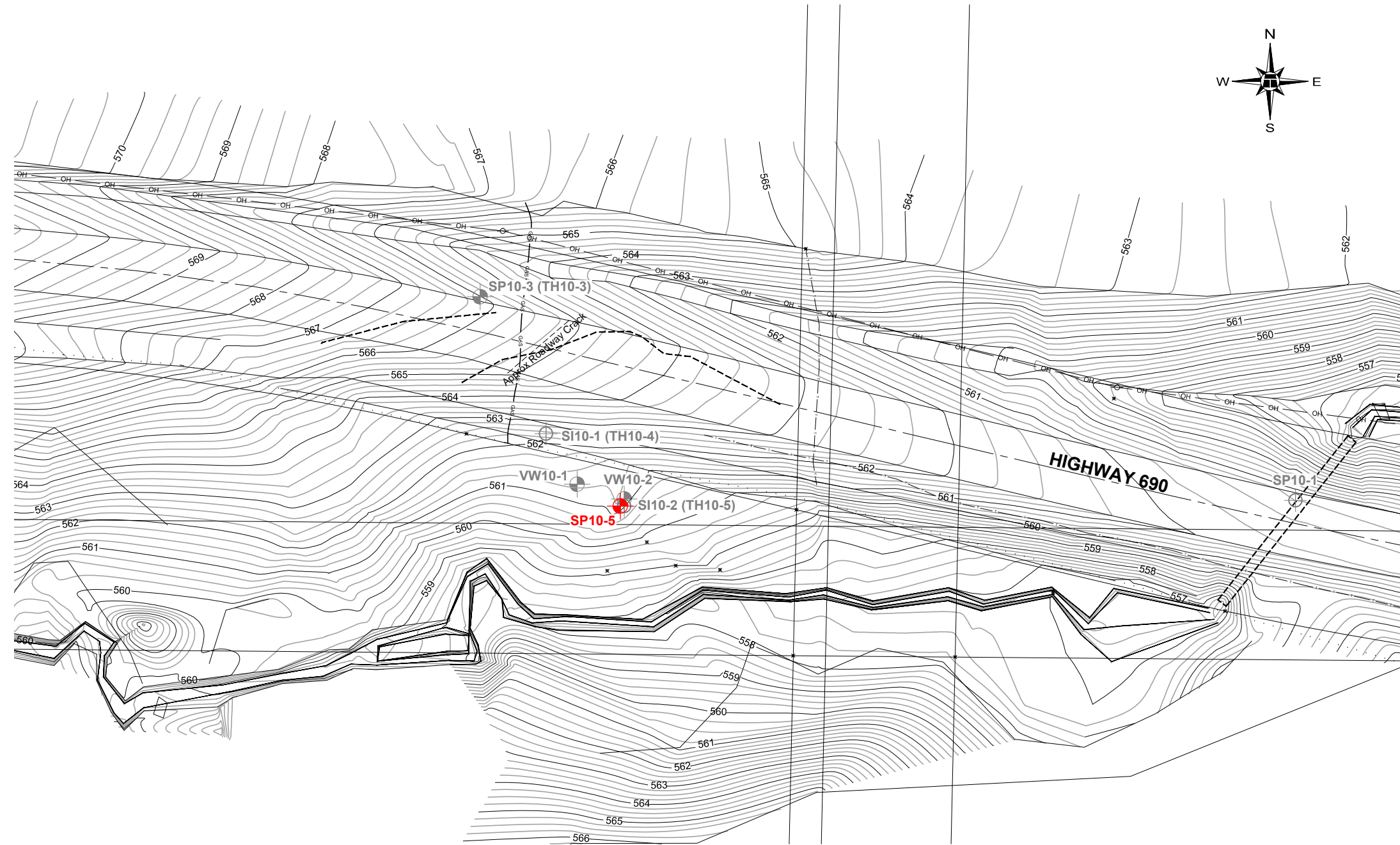
**STANDPIPE PIEZOMETER READINGS**

SP#	GPS Location (NAD83)		Date	Stick-up (m)	Reading below top of casing (m)	Bottom Pipe Depth (below top of casing (m))
SP10-5	56.74110	117.60529	17-Sep-15	0.7	2.40	3.66

**VIBRATING WIRE PIEZOMETER (VW) READINGS**

VW #	Latitude (N)	Longitude (W)	Date	Reading (Dg/°C)	Identification
VW10-1	56.74113	117.60540	17-Sep-15	Not Working	100D10918

**INSPECTOR REPORT**

BASE PLAN PROVIDED BY HOGGAN ENGINEERING & TESTING LTD.



PEACE REGION (PEACE RIVER/ HIGH LEVEL) 2015



PH47: HWY 690:02 - DEADWOOD SLIDE  
INSTRUMENT LOCATIONS

DWG No. 15-16-360-PH47

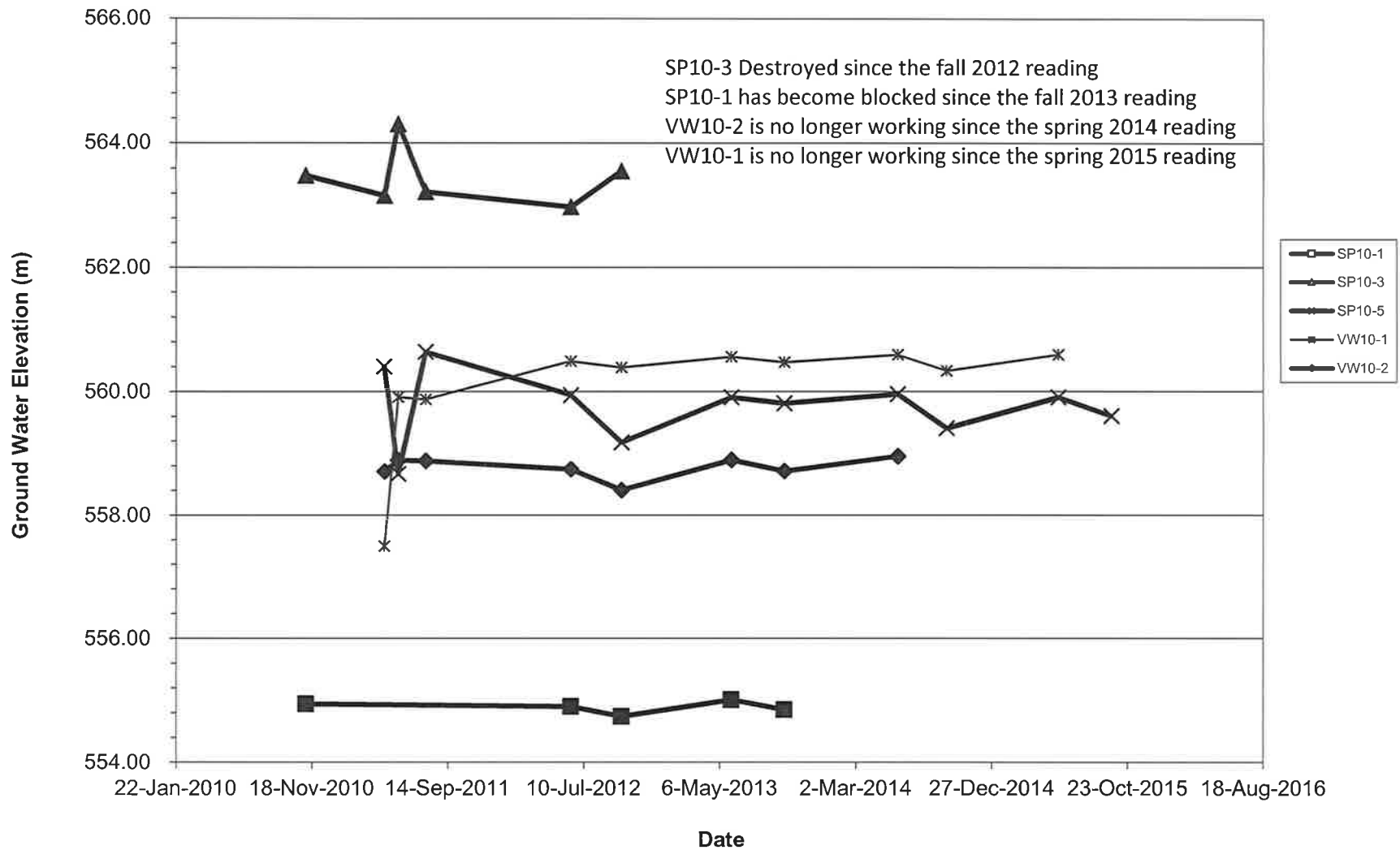
DRAWN BY	ML
DESIGNED BY	NFR
APPROVED BY	DWP
SCALE	1:750
DATE	OCTOBER 2015
FILE No.	15-16-360



**LEGEND :**

-  INSTRUMENT LOCATION
-  INSTRUMENT NOT IN USE

### PH47 Deadwood Slide - Water Level Readings In Piezometers



## PIEZOMETER DATA FOR PH47: DEADWOOD SLIDE

