



**ALBERTA TRANSPORTATION  
PEACE REGION (PEACE RIVER / HIGH LEVEL)  
INSTRUMENTATION MONITORING RESULTS**

**FALL 2014**

**SECTION D  
DATA PRESENTATION**

**SITE PH47: HWY 690:02, DEADWOOD SLIDE**

ALBERTA TRANSPORTATION  
 PEACE REGION (PEACE RIVER / HIGH LEVEL)  
 INSTRUMENTATION MONITORING FIELD SUMMARY  
 FALL 2014

<b>Location:</b> PH47 Deadwood Slide <b>File Number:</b> 15-16-304 <b>Probe:</b> - <b>Cable:</b> -	<b>Readout:</b> - <b>Extension:</b> - <b>Temp:</b> 15 <b>Read by:</b> CMG/JLG
---	--

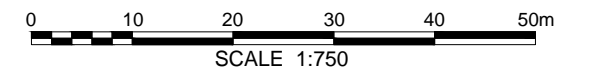
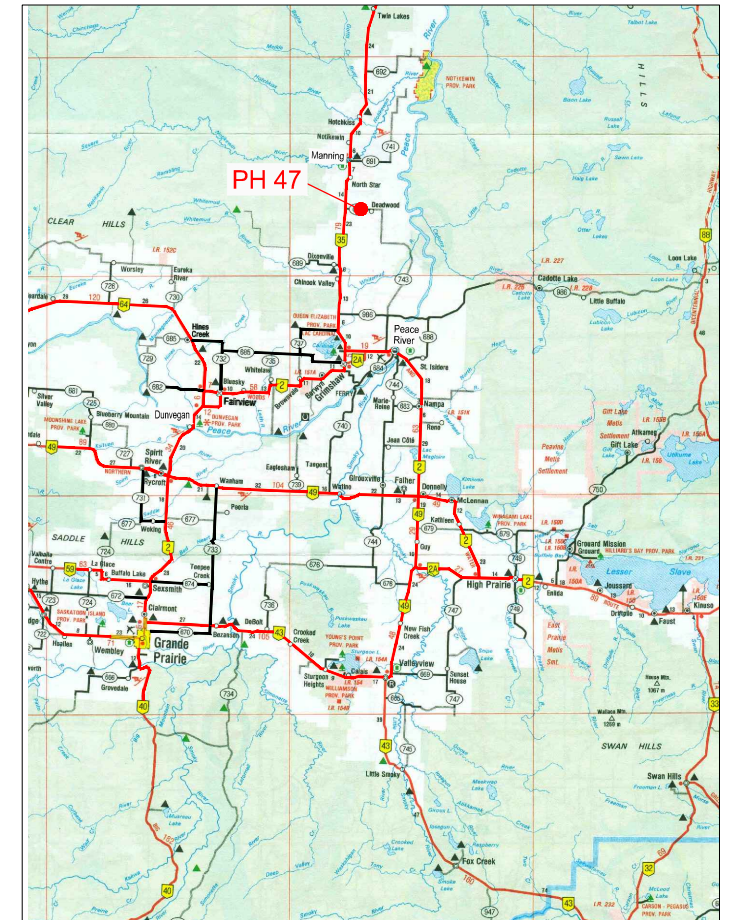
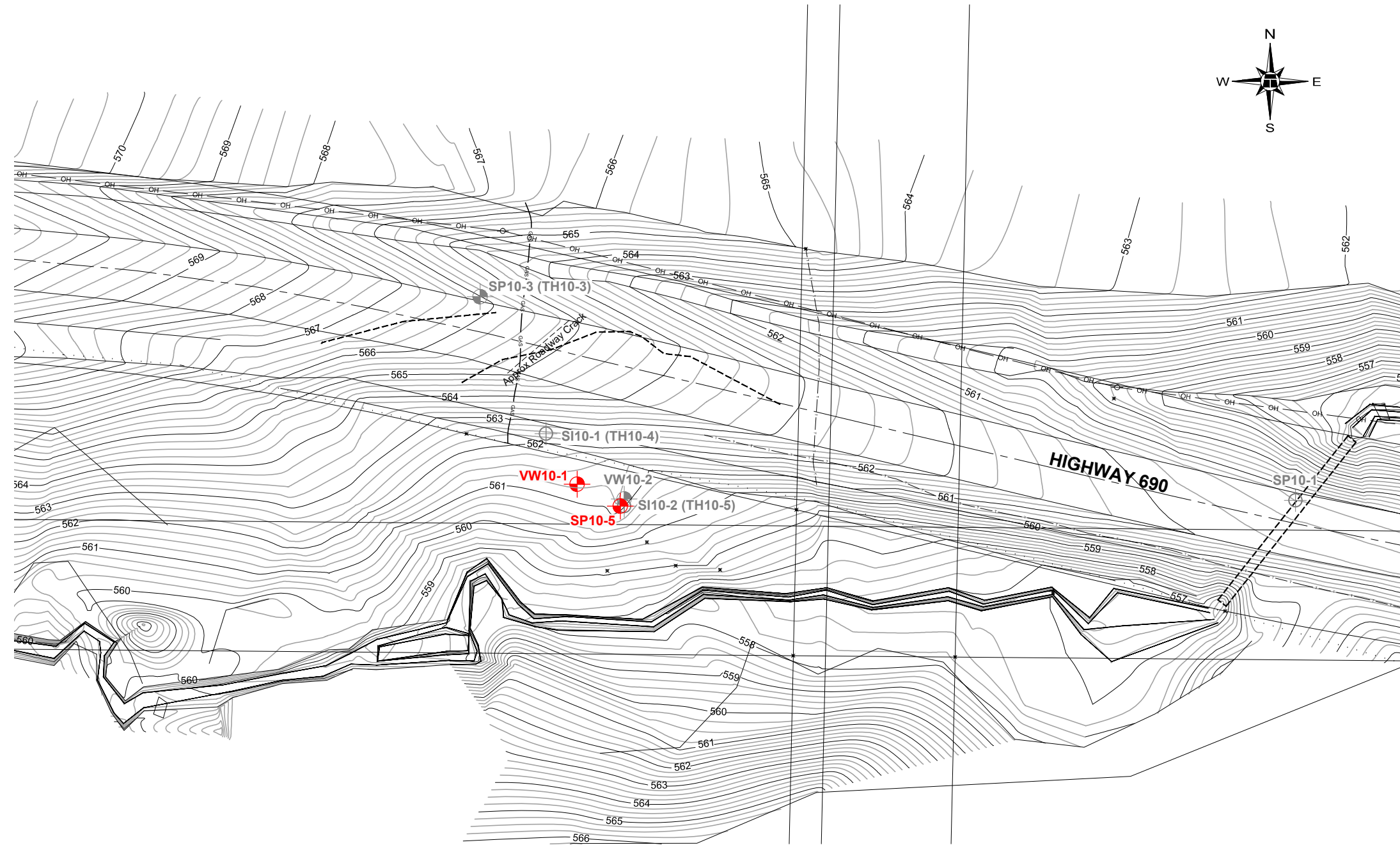
**STANDPIPE PIEZOMETER READINGS**

SP#	GPS Location (NAD83)		Date	Stick-up (m)	Reading below top of casing (m)	Bottom Pipe Depth (below top of casing (m))
SP10-5	56.74110	117.60529	18-Sep-14	0.7	2.60	3.66

**VIBRATING WIRE PIEZOMETER (VW) READINGS**

VW #	Latitude (N)	Longitude (W)	Date	Reading (Dg/ <sup>o</sup> C)	Identification
VW10-1	56.74113	117.60540	18-Sep-14	3444.9/4.6	100D10918
VW10-2	56.74111	117.60528	18-Sep-14	NOT WORKING	100D10917

**INSPECTOR REPORT**

BASE PLAN PROVIDED BY HOGGAN ENGINEERING & TESTING LTD.





PEACE REGION (PEACE RIVER/ HIGH LEVEL) 2014

PH47: HWY 690:02 - DEADWOOD SLIDE  
INSTRUMENT LOCATIONS

DWG No. 15-16-304-PH47

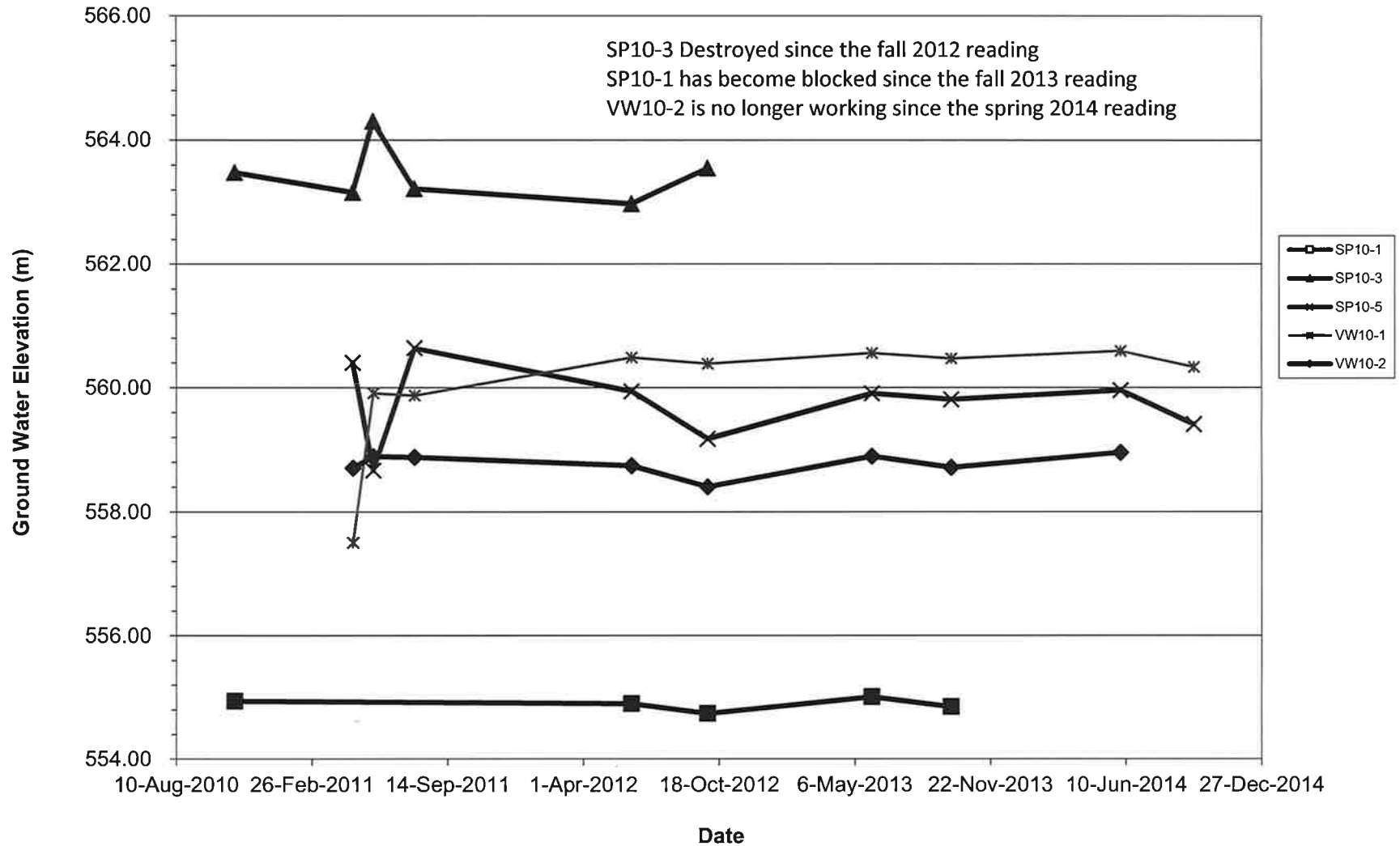
**LEGEND :**

-  INSTRUMENT LOCATION
-  INSTRUMENT NOT IN USE

DRAWN BY	ML
DESIGNED BY	NFR
APPROVED BY	DWP
SCALE	1:750
DATE	OCTOBER 2014
FILE No.	15-16-304



### PH47 Deadwood Slide - Water Level Readings In Piezometers



## PIEZOMETER DATA FOR PH47: DEADWOOD SLIDE

