



**ALBERTA TRANSPORTATION
PEACE REGION (PEACE RIVER / HIGH LEVEL)
INSTRUMENTATION MONITORING RESULTS**

SPRING 2013

**SECTION D
DATA PRESENTATION**

SITE PH47: HWY 690:02, DEADWOOD SLIDE

**ALBERTA TRANSPORTATION
PEACE REGION (PEACE RIVER / HIGH LEVEL)
INSTRUMENTATION MONITORING FIELD SUMMARY
SPRING 2013**

Location: PH47 Deadwood Slide File Number: 15-16-284 Probe: - Cable: -	Readout: - Extension: - Temp: 19°C Read by: CMG/JAP
---	--

STANDPIPE PIEZOMETER READINGS

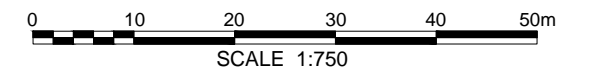
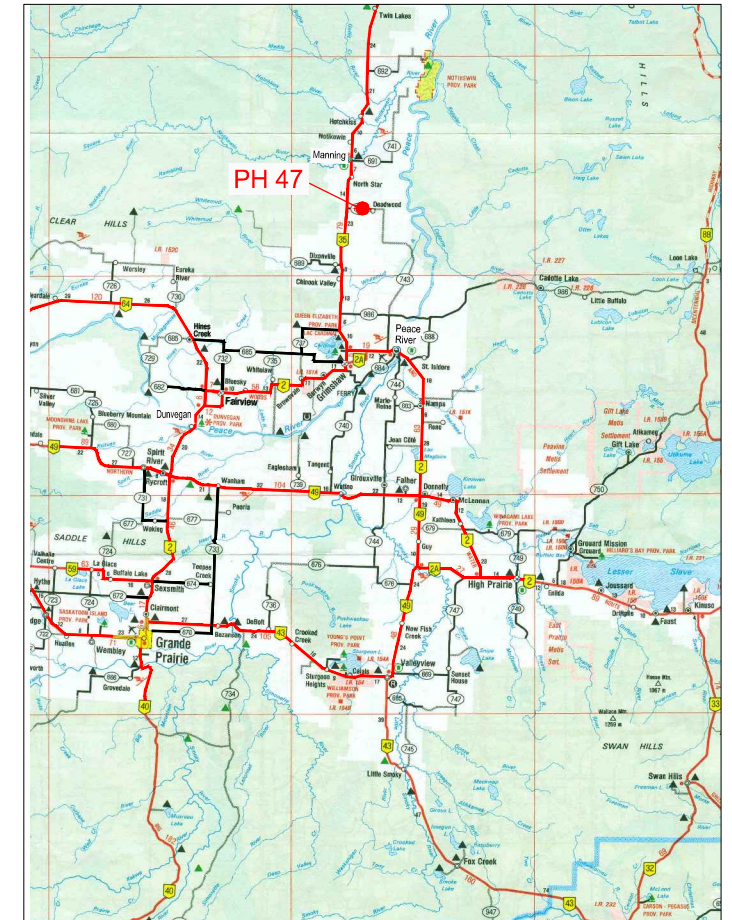
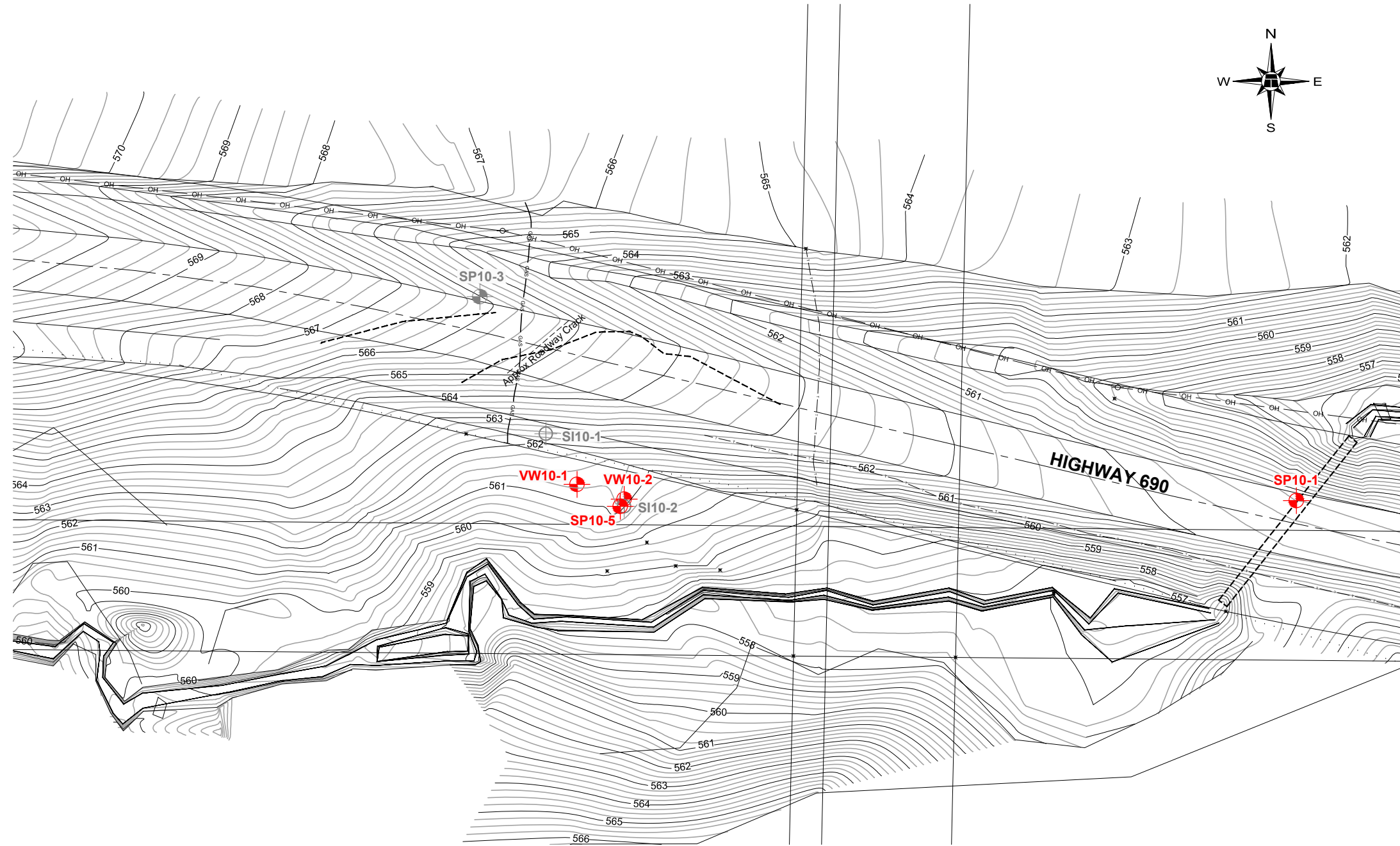
SP#	GPS Location (NAD83)		Date	Stick-up (m)	Reading below top of casing (m)	Bottom Pipe Depth (below top of casing (m))
SP10-1*	56.74112	117.60300	31-May-13	0.0	4.53	9.66
SP10-3	56.74139	117.60565	31-May-13	1.0	**	9.90
SP10-5	56.74110	117.60529	31-May-13	0.7	2.10	3.66

VIBRATING WIRE PIEZOMETER (VW) READINGS

VW #	Latitude (N)	Longitude (W)	Date	Reading (Dg/°C)	Identification
VW10-1	56.74113	117.60540	31-May-13	3425.5/4.8	100D10918
VW10-2	56.74111	117.60528	31-May-13	3706.3/3.8	100D10917

INSPECTOR REPORT ON 31-MAY-13

* SP10-1 is flushmounted in the highway.
** Can't be located (could be destroyed)



BASE PLAN PROVIDED BY HOGGAN ENGINEERING & TESTING LTD.



PEACE REGION (PEACE RIVER/ HIGH LEVEL) 2013



PH47: HWY 690:02 - DEADWOOD SLIDE
INSTRUMENT LOCATIONS

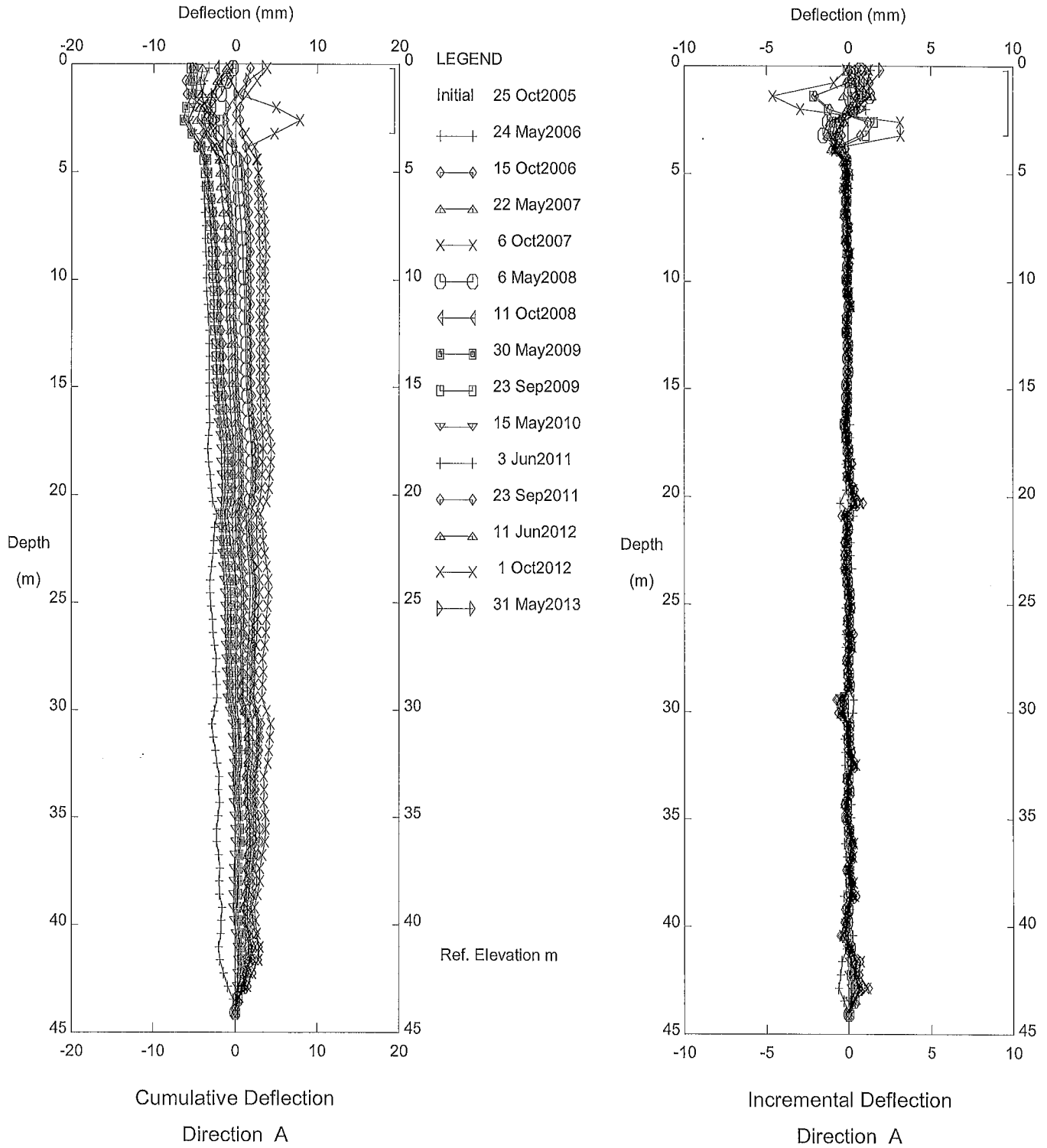
DWG No. 15-16-284-PH47

DRAWN BY	ML
DESIGNED BY	NFR
APPROVED BY	DWP
SCALE	1:750
DATE	JULY 2013
FILE No.	15-16-284



LEGEND :

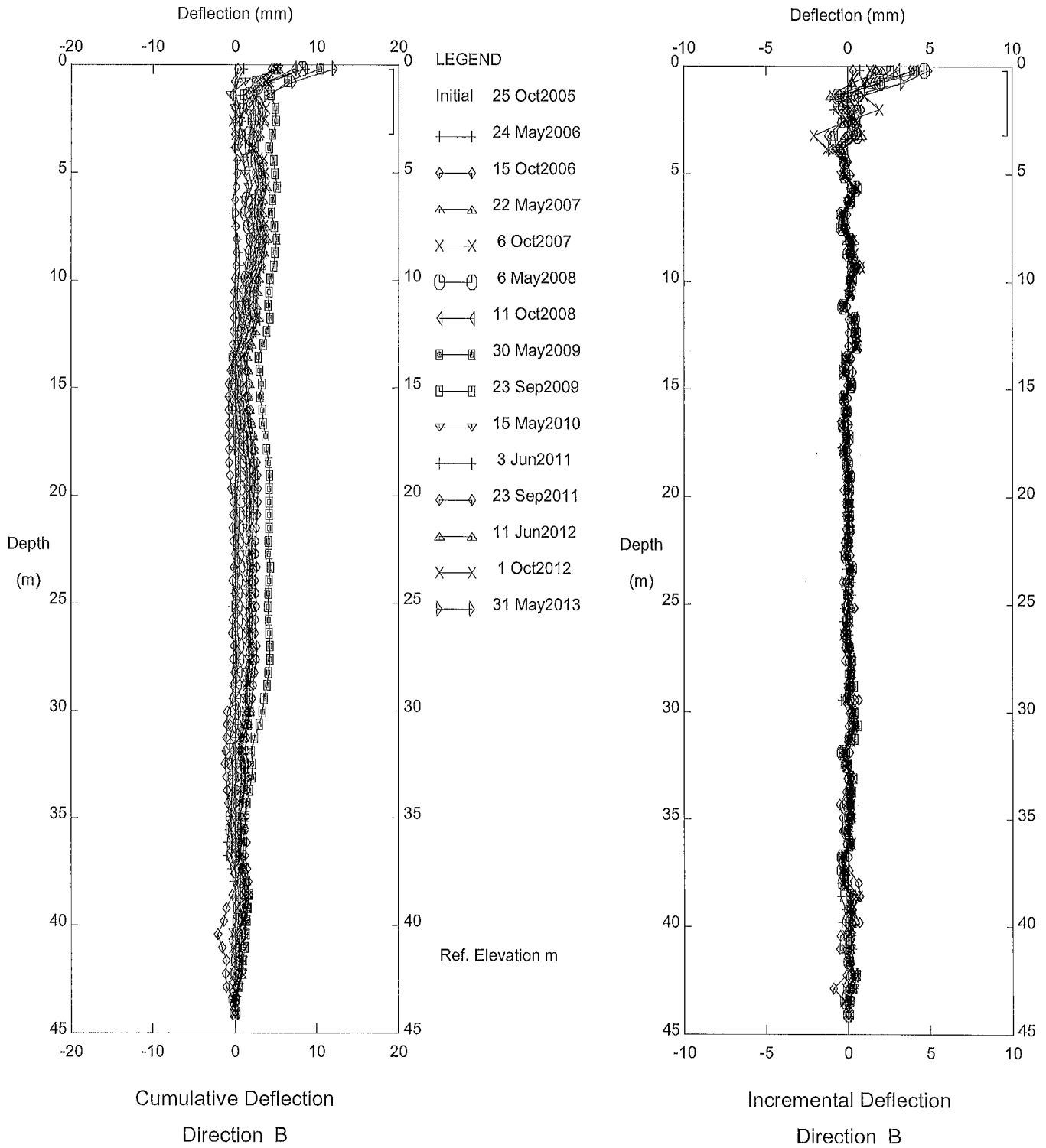
-  INSTRUMENT LOCATION
-  INSTRUMENT NOT IN USE



HWY 88, Inclinometer SI-3

South Abutment

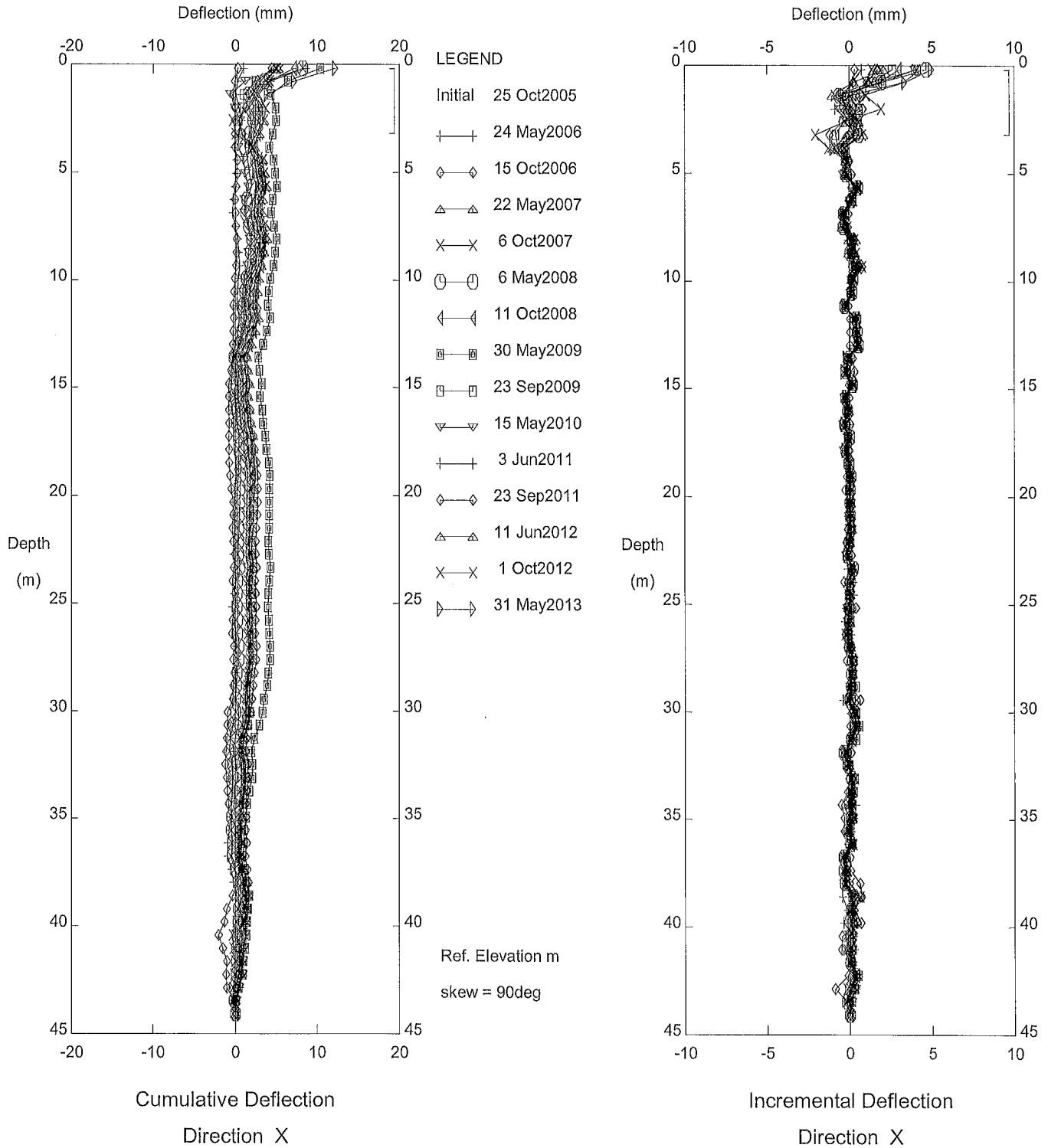
Thurber Engineering Ltd. - Edmonton, AB



HWY 88, Inclinometer SI-3

South Abutment

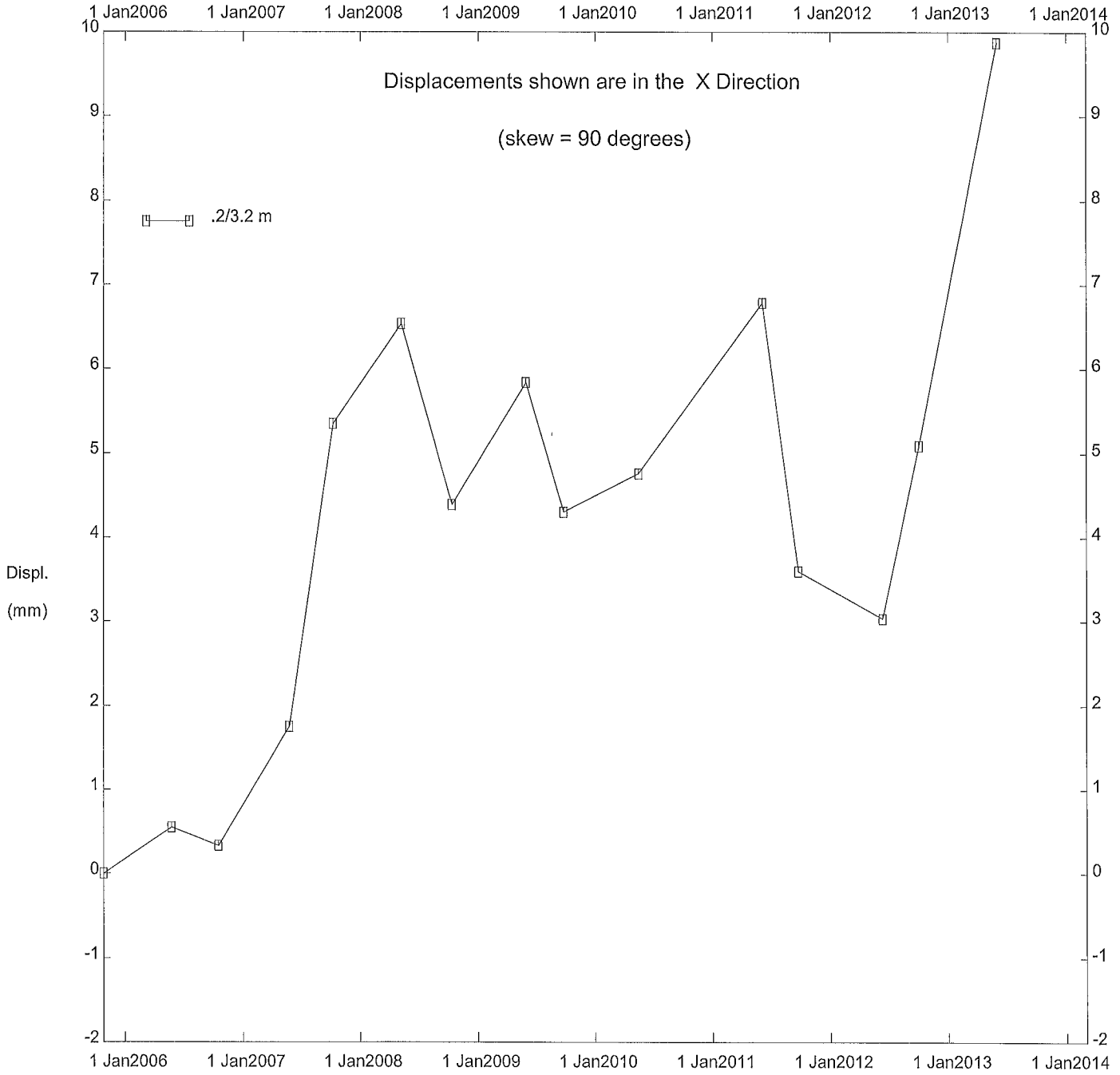
Thurber Engineering Ltd. - Edmonton, AB



HWY 88, Inclinometer SI-3

South Abutment

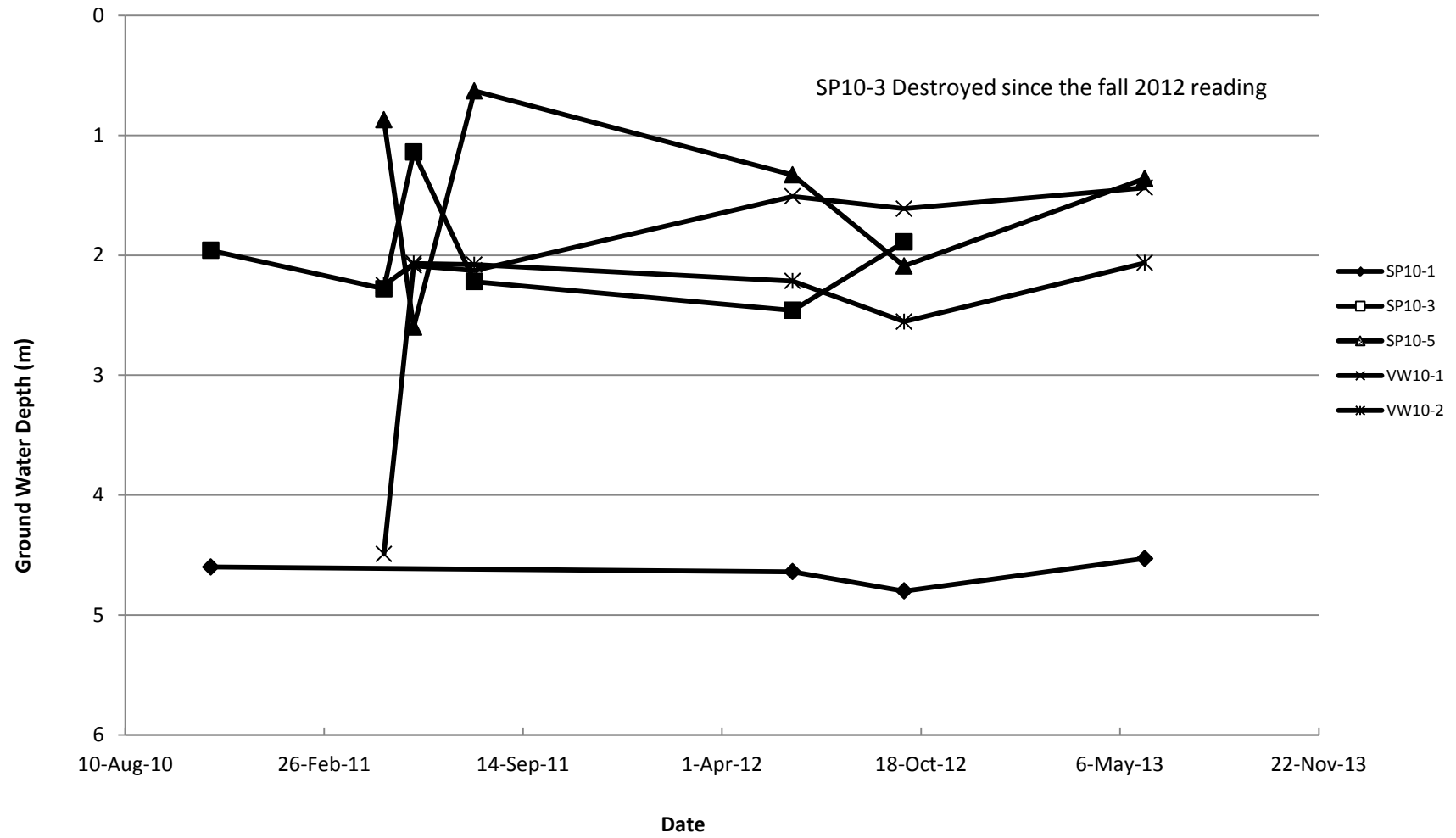
Thurber Engineering Ltd. - Edmonton, AB



HWY 88, Inclinator SI-3

South Abutment

PIEZOMETER DATA FOR PH47: DEADWOOD SLIDE



PH47 Deadwood Slide - Water Level Readings In Piezometers

