



**ALBERTA TRANSPORTATION  
PEACE REGION (PEACE RIVER / HIGH LEVEL)  
INSTRUMENTATION MONITORING RESULTS**

**FALL 2013**

**SECTION D  
DATA PRESENTATION**

**SITE PH47: HWY 690:02, DEADWOOD SLIDE**

ALBERTA TRANSPORTATION  
 PEACE REGION (PEACE RIVER / HIGH LEVEL)  
 INSTRUMENTATION MONITORING FIELD SUMMARY  
 FALL 2013

<b>Location:</b> PH47 Deadwood Slide <b>File Number:</b> 15-16-284 <b>Probe:</b> - <b>Cable:</b> -	<b>Readout:</b> - <b>Extension:</b> - <b>Temp:</b> 8 <b>Read by:</b> CMG/JAP
---	---

**STANDPIPE PIEZOMETER READINGS**

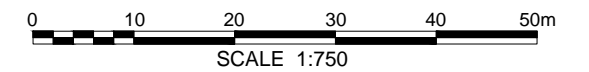
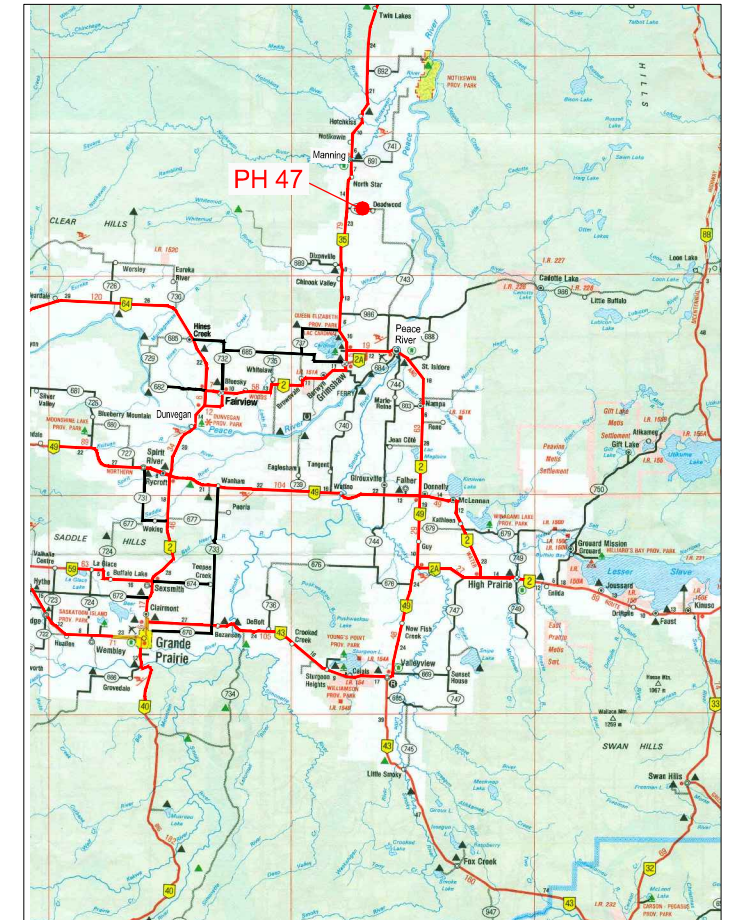
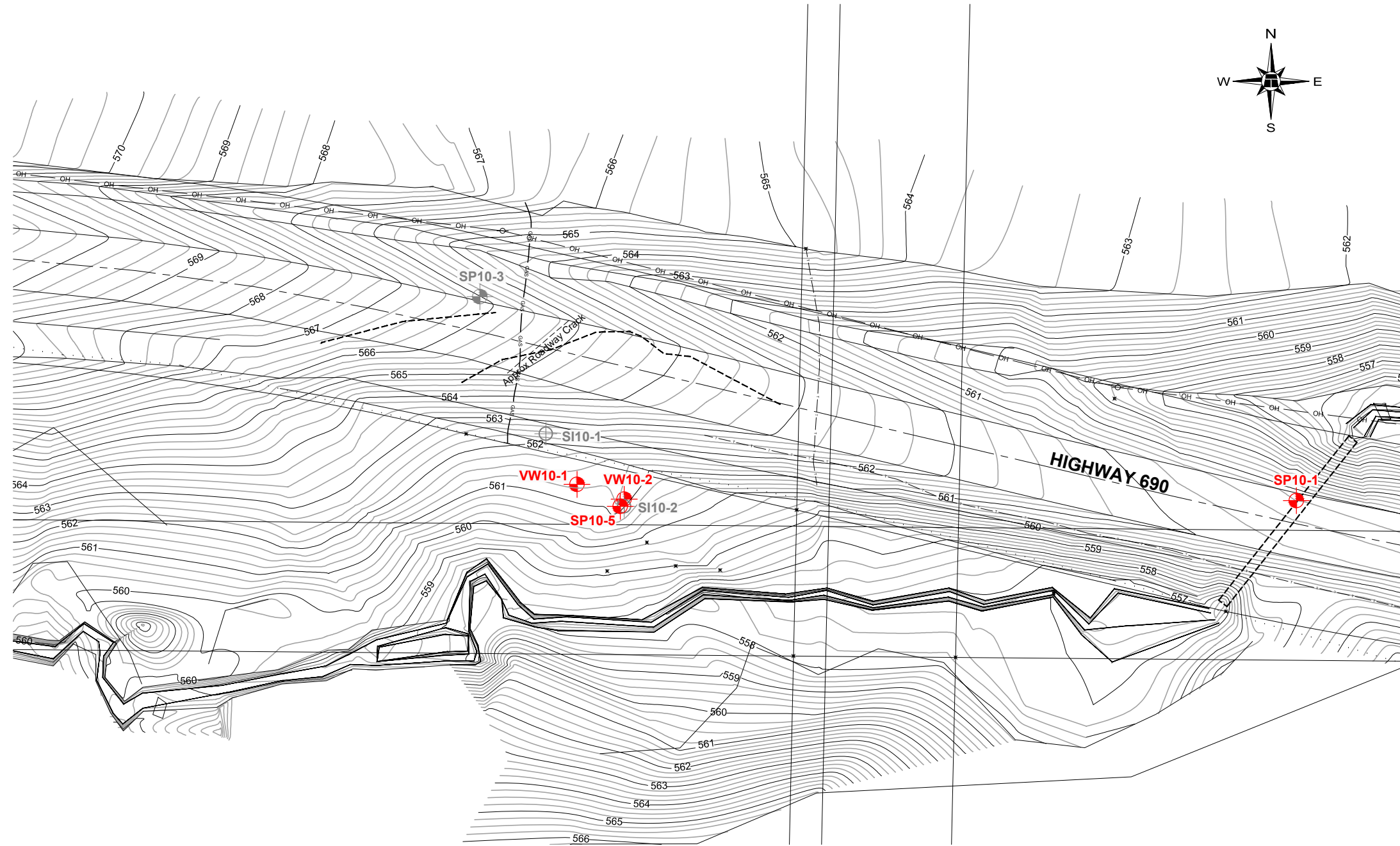
SP#	GPS Location (NAD83)		Date	Stick-up (m)	Reading below top of casing (m)	Bottom Pipe Depth (below top of casing (m))
SP10-1*	56.74112	117.60300	25-Sep-13	0.0	4.69	9.66
SP10-5	56.74110	117.60529	25-Sep-13	0.7	2.20	3.66

**VIBRATING WIRE PIEZOMETER (VW) READINGS**

VW #	Latitude (N)	Longitude (W)	Date	Reading (Dg/ <sup>o</sup> C)	Identification
VW10-1	56.74113	117.60540	25-Sep-13	3433.1/4.8	100D10918
VW10-2	56.74111	117.60528	25-Sep-13	3720.7/4.9	100D10917

**INSPECTOR REPORT ON 25-SEPT-13**

* SP10-1 is flushmounted in the highway.



BASE PLAN PROVIDED BY HOGGAN ENGINEERING & TESTING LTD.



PEACE REGION ( PEACE RIVER/ HIGH LEVEL) 2013



PH47: HWY 690:02 - DEADWOOD SLIDE  
INSTRUMENT LOCATIONS

DWG No. 15-16-284-PH47

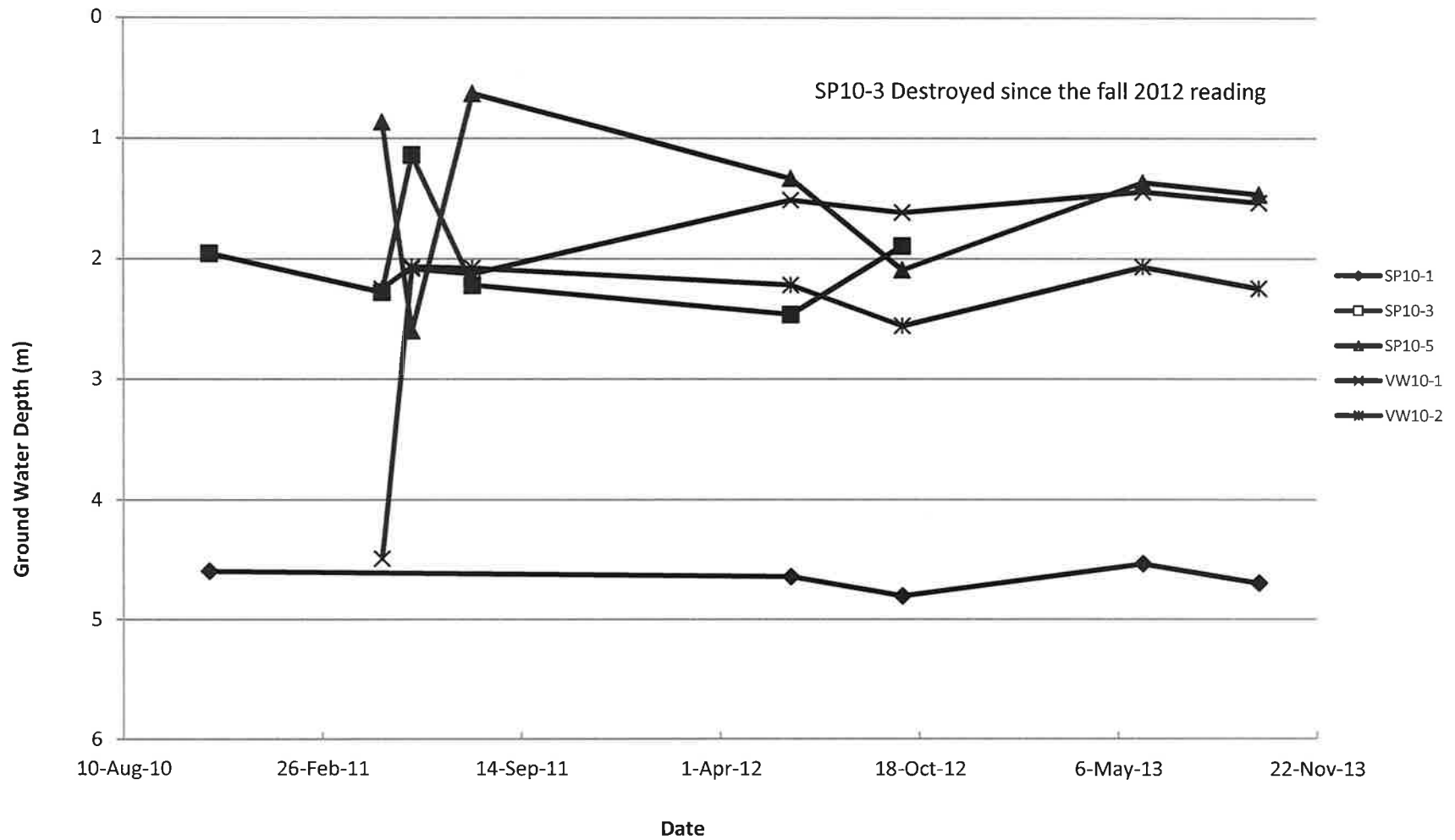
DRAWN BY	ML
DESIGNED BY	NFR
APPROVED BY	DWP
SCALE	1:750
DATE	DECEMBER 2013
FILE No.	15-16-284



**LEGEND :**

-  INSTRUMENT LOCATION
-  INSTRUMENT NOT IN USE

## PIEZOMETER DATA FOR PH47: DEADWOOD SLIDE



### PH47 Deadwood Slide - Water Level Readings In Piezometers

