



**ALBERTA TRANSPORTATION  
PEACE REGION (PEACE RIVER / HIGH LEVEL)  
INSTRUMENTATION MONITORING RESULTS**

**SPRING 2012**

**SECTION D  
DATA PRESENTATION**

**SITE PH47: HWY 690:02, DEADWOOD SLIDE**

**ALBERTA TRANSPORTATION  
PEACE REGION (PEACE RIVER / HIGH LEVEL)  
SLOPE INCLINOMETER MONITORING FIELD SUMMARY  
SPRING 2012**

<b>Location:</b> PH47 Deadwood Slide <b>File Number:</b> 15-16-276 <b>Probe:</b> - <b>Cable:</b> -	<b>Readout:</b> - <b>Extension:</b> - <b>Temp:</b> 20°C <b>Read by:</b> CMG/JAP
---	--

**SLOPE INCLINOMETER (SI) READINGS**

SI#	GPS Location (NAD83)		Date	Stickup (m)	Depth from top of clamps (ft)	Magn. North A+ Groove	Current Bottom Depth Readings				Remarks
							A+	A-	B+	B-	
SI10-1	56.74120	117.60548	11-Jun-12	0.63	56 to 2	330 °	-	-	-	-	Sheared at 35 ft
SI10-2	56.74110	117.60528	11-Jun-12	1.04	50 to 2	360 °	-	-	-	-	Sheared at 21 ft

**STANDPIPE PIEZOMETER READINGS**

SP#	GPS Location (NAD83)		Date	Stick-up (m)	Reading below top of casing (m)	Bottom Pipe Depth (below top of casing (m))
SP10-1*	56.74112	117.60300	11-Jun-12	0.0	4.64	9.66
SP10-3	56.74139	117.60565	11-Jun-12	1.0	3.46	9.90
SP10-5	56.74110	117.60529	11-Jun-12	0.7	2.07	3.66

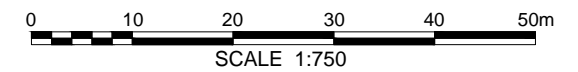
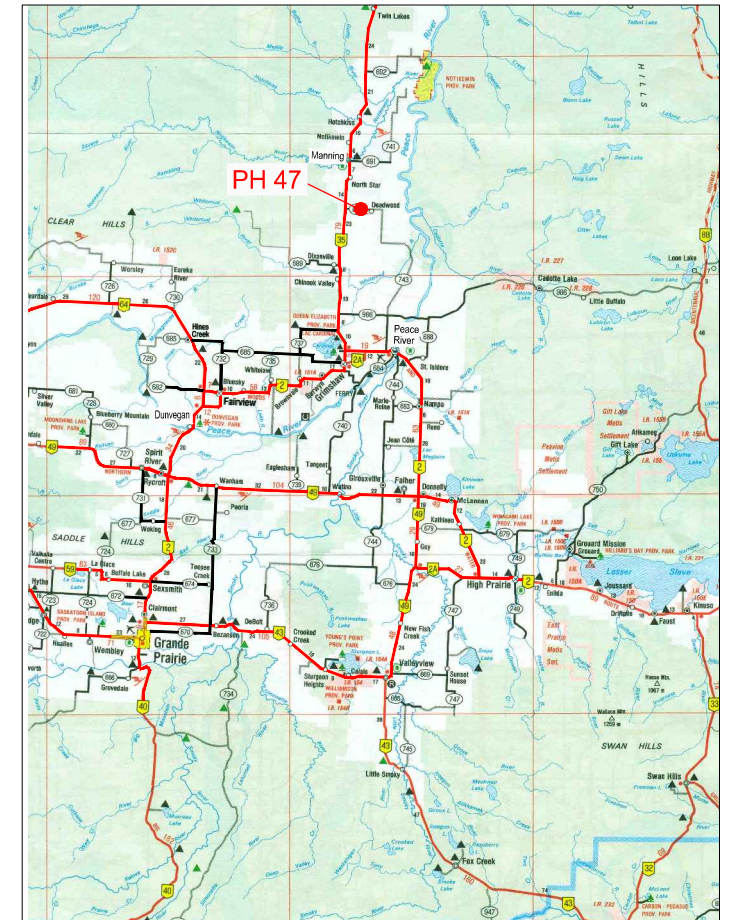
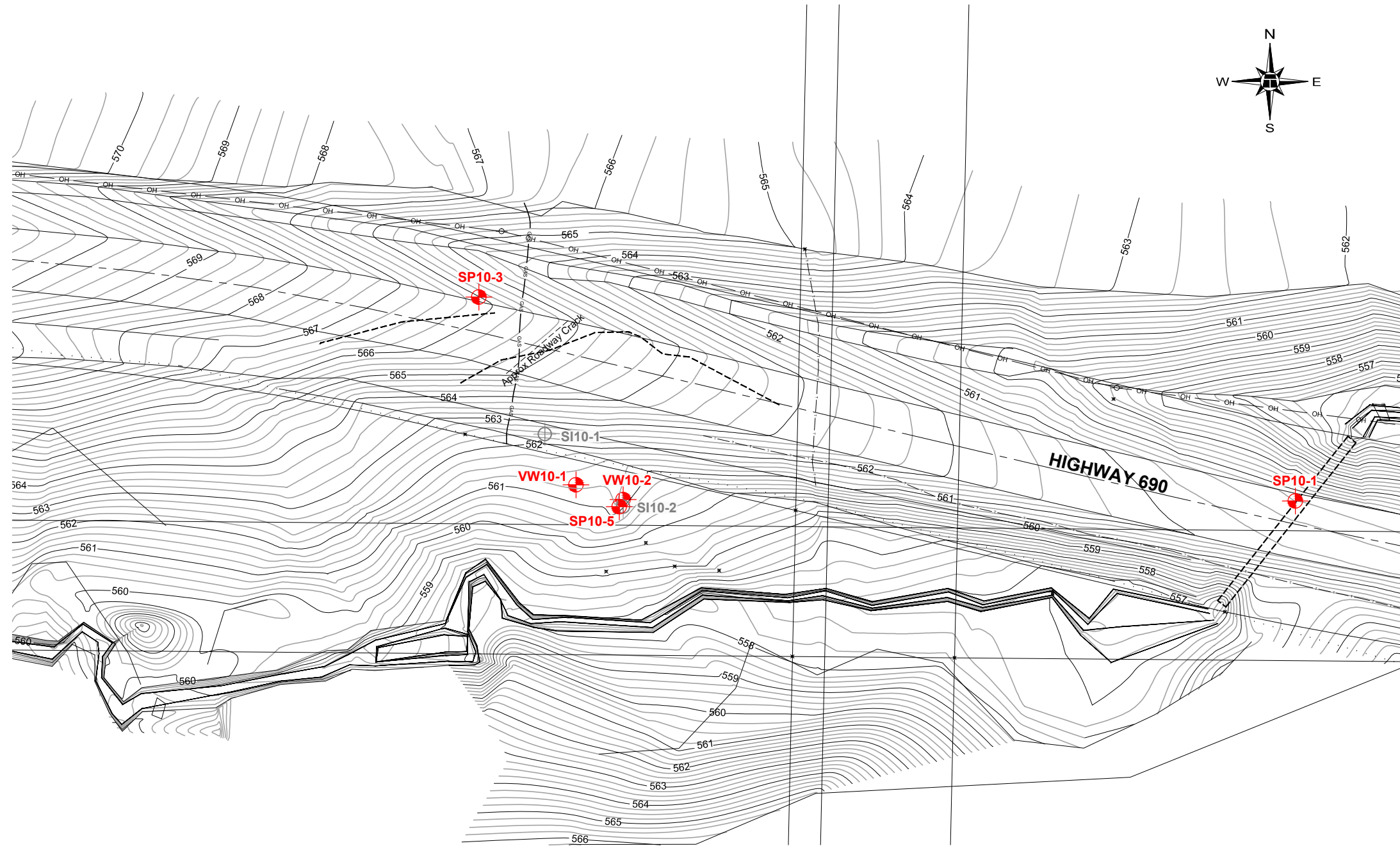
**VIBRATING WIRE PIEZOMETER (VW) READINGS**

VW #	Latitude (N)	Longitude (W)	Date	Reading (Dg/°C)	Identification
VW10-1	56.74113	117.60540	11-Jun-12	3431.7 / 4.5	100D10918
VW10-2	56.74111	117.60528	11-Jun-12	3719.1 / 3.4	100D10917

**INSPECTOR REPORT ON 11-JUNE-12**

* SP10-1 is flushmounted in the highway.

Z:\1515-16-276\15-16-276 PH47-1 (JUNE 21 2012).dwg - 2 - Jul. 30. 2012



BASE PLAN PROVIDED BY HOGGAN ENGINEERING & TESTING LTD.

**Government  
of Alberta**  
Transportation

PEACE REGION ( PEACE RIVER/ HIGH LEVEL) 2012



PH47: HWY 690:02 - DEADWOOD SLIDE  
INSTRUMENT LOCATIONS

DWG No. 15-16-276-PH47-1

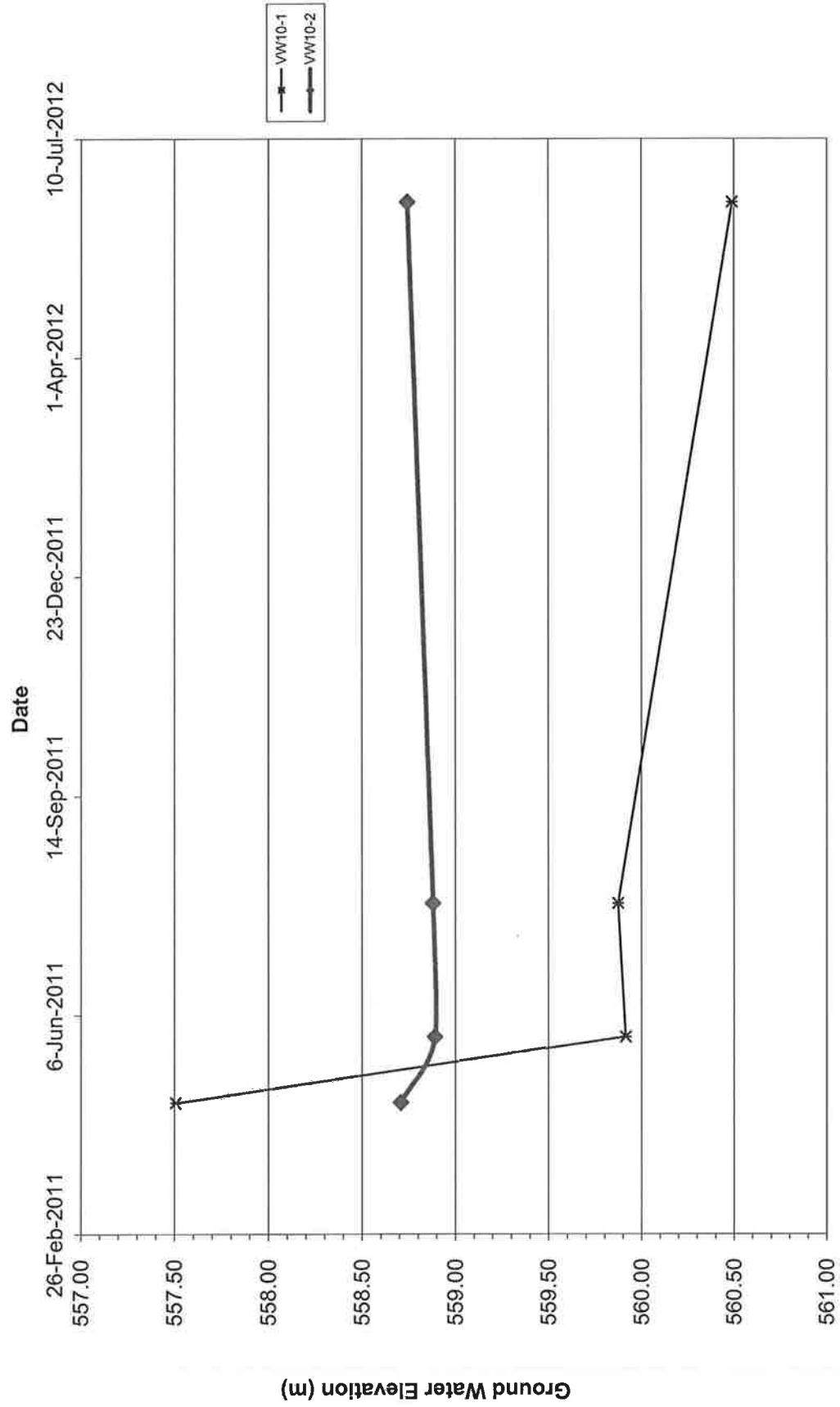
DRAWN BY	ML
DESIGNED BY	NFR
APPROVED BY	DWP
SCALE	1:750
DATE	JULY 2012
FILE No.	15-16-276



**LEGEND :**

-  INSTRUMENT LOCATION
-  INSTRUMENT NOT IN USE

# PH47 Deadwood Slide - Water Level Readings In Vibrating Wire Piezometers



# STANDPIPE PIEZOMETER DATA FOR PH47: DEADWOOD SLIDE

