



**ALBERTA TRANSPORTATION
PEACE REGION (PEACE RIVER / HIGH LEVEL)
INSTRUMENTATION MONITORING RESULTS**

FALL 2012

**SECTION D
DATA PRESENTATION**

SITE PH47: HWY 690:02, DEADWOOD SLIDE

ALBERTA TRANSPORTATION
 PEACE REGION (PEACE RIVER / HIGH LEVEL)
 INSTRUMENTATION MONITORING FIELD SUMMARY
 FALL 2012

Location: PH47 Deadwood Slide
 File Number: 15-16-276
 Probe: -
 Cable: -
 Readout: -
 Extension: -
 Temp: 3°C
 Read by: CMG/JAP

STANDPIPE PIEZOMETER READINGS

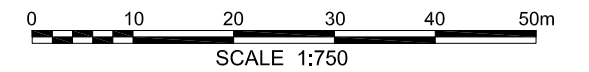
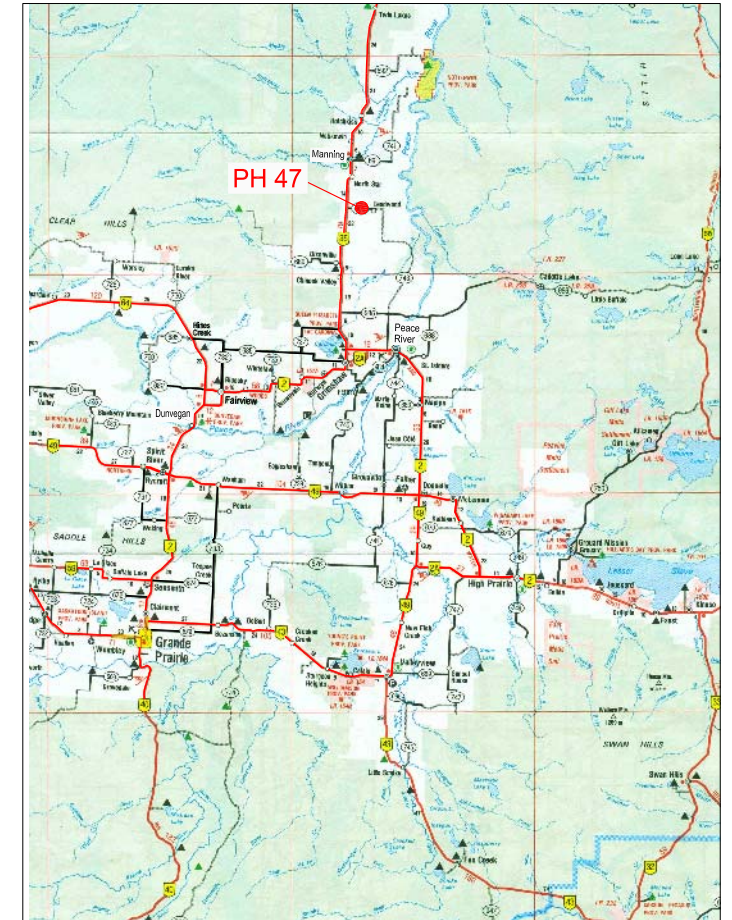
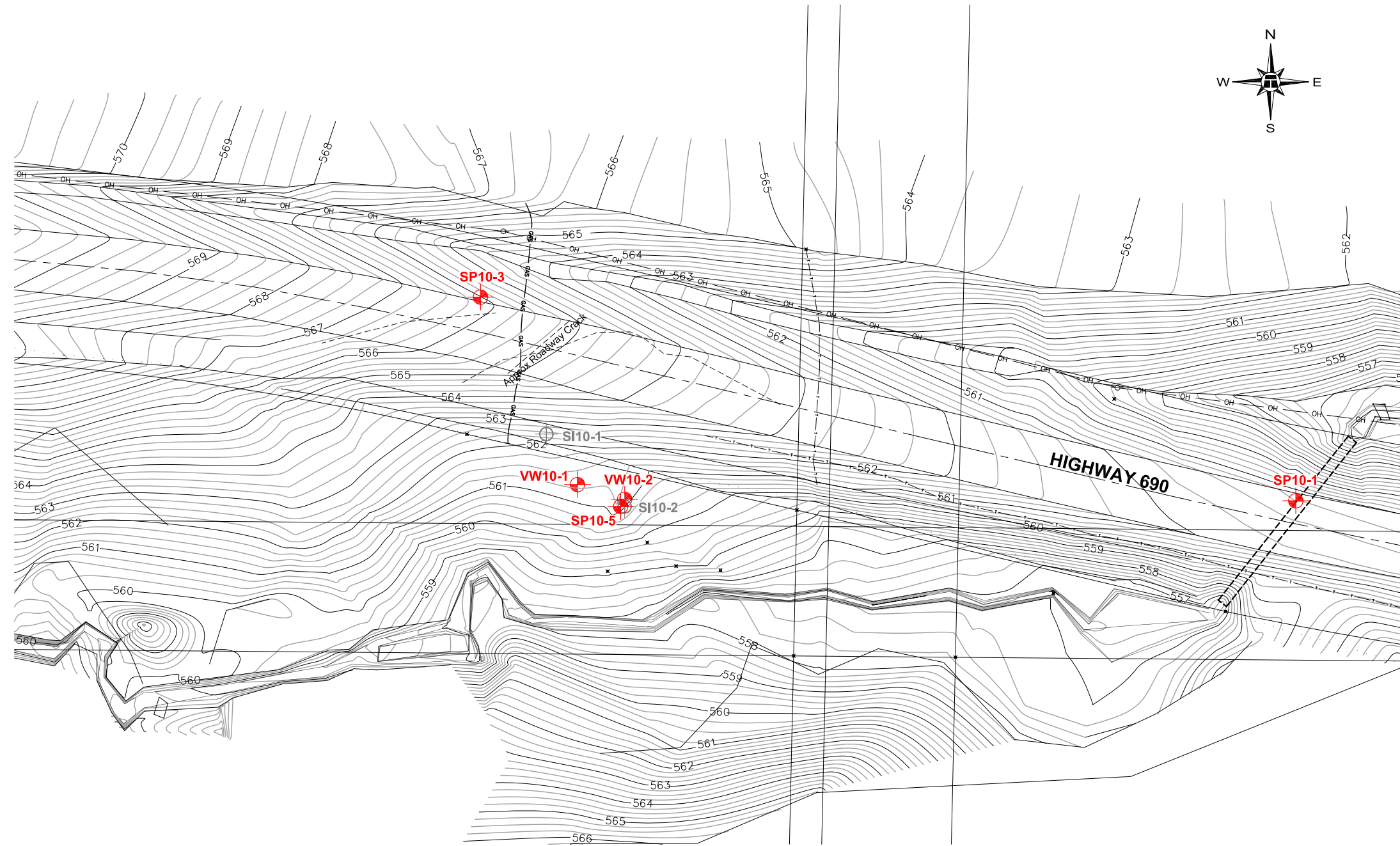
SP#	GPS Location (NAD83)	Date	Stick-up (m)	Reading below top of casing (m)	Bottom Pipe Depth (below top of casing (m))
SP10-1*	56.74112	1-Oct-12	0.0	4.80	9.66
SP10-3	56.74139	1-Oct-12	1.0	2.89	9.90
SP10-5	56.74110	1-Oct-12	0.7	2.83	3.66

VIBRATING WIRE PIEZOMETER (VW) READINGS

VW #	Latitude (N)	Longitude (W)	Date	Reading (Dg/°C)	Identification
VW10-1	56.74113	117.60540	1-Oct-12	3440.4 / 4.3	100D10918
VW10-2	56.74111	117.60528	1-Oct-12	3746.7 / 4.6	100D10917

INSPECTOR REPORT ON 1-OCT-12

* SP10-1 is flushmounted in the highway.



BASE PLAN PROVIDED BY HOGGAN ENGINEERING & TESTING LTD.



PEACE REGION (PEACE RIVER/ HIGH LEVEL) 2012



PH47: HWY 690:02 - DEADWOOD SLIDE
INSTRUMENT LOCATIONS

DWG No. 15-16-276-PH47-1

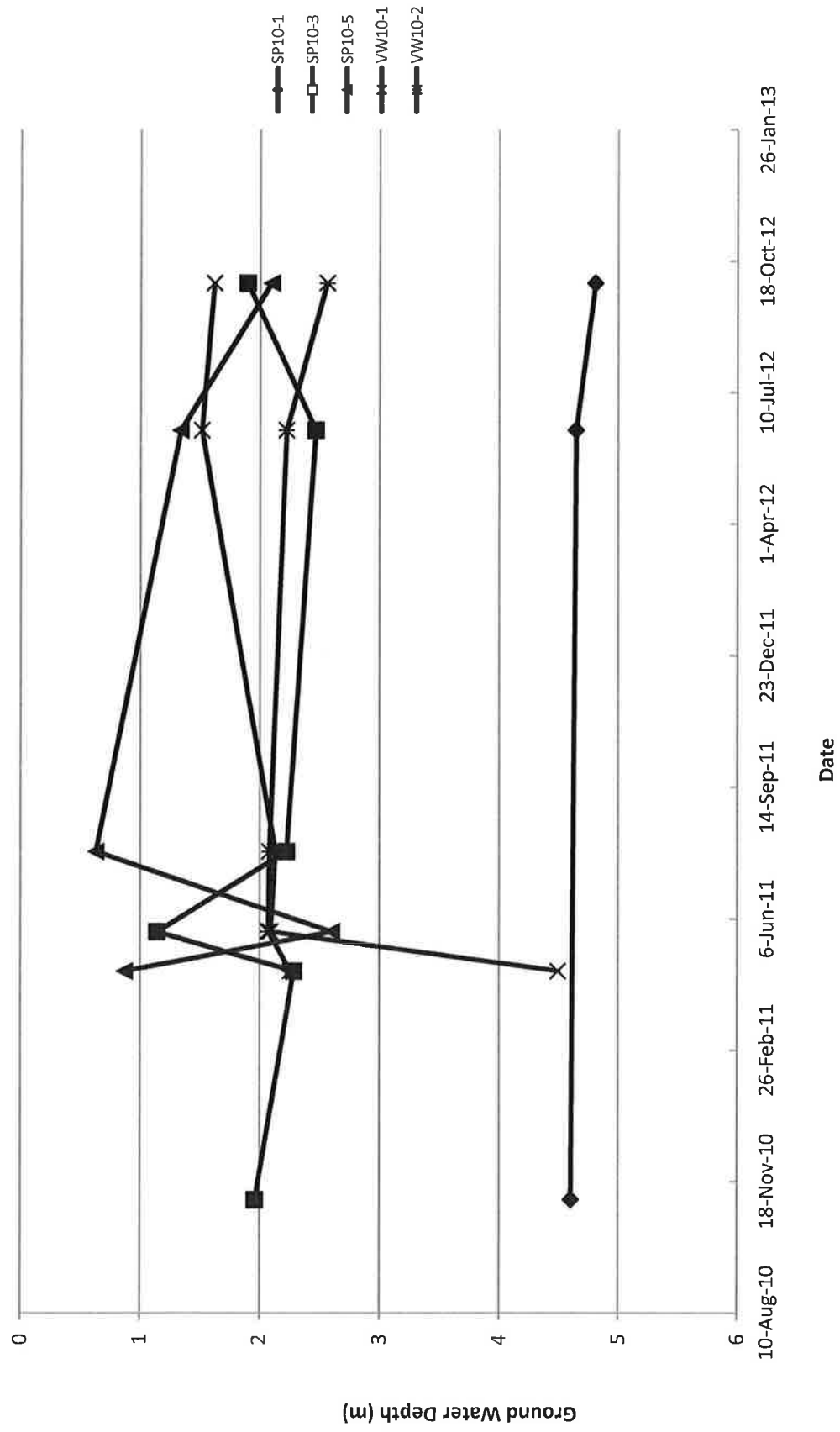
DRAWN BY	ML
DESIGNED BY	NFR
APPROVED BY	DWP
SCALE	1:750
DATE	NOVEMBER 2012
FILE No.	15-16-276



LEGEND :

-  INSTRUMENT LOCATION
-  INSTRUMENT NOT IN USE

PIEZOMETER DATA FOR PH47: DEADWOOD SLIDE



PH47 Deadwood Slide - Water Level Readings In Piezometers

