

View of river valley below slide area. Photo taken from about mid slope under slide (see below).



Looking up at slide area and H734:12







Outlet of 600 mm diameter CSP culvert damaged by slide. Water flow is from inside highway embankment (no inflow at upstream end).



Looking south





Looking north







Looking south



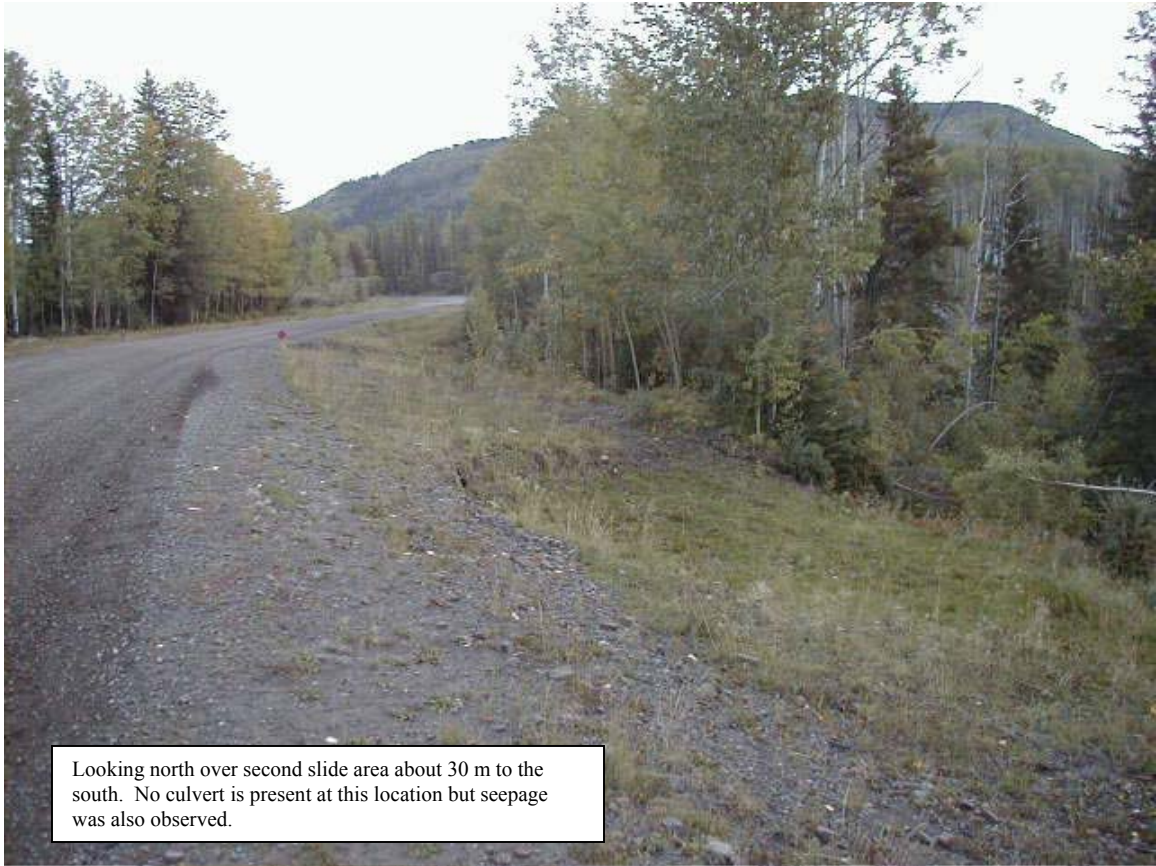


Looking north at upstream end of 600 mm dia culvert





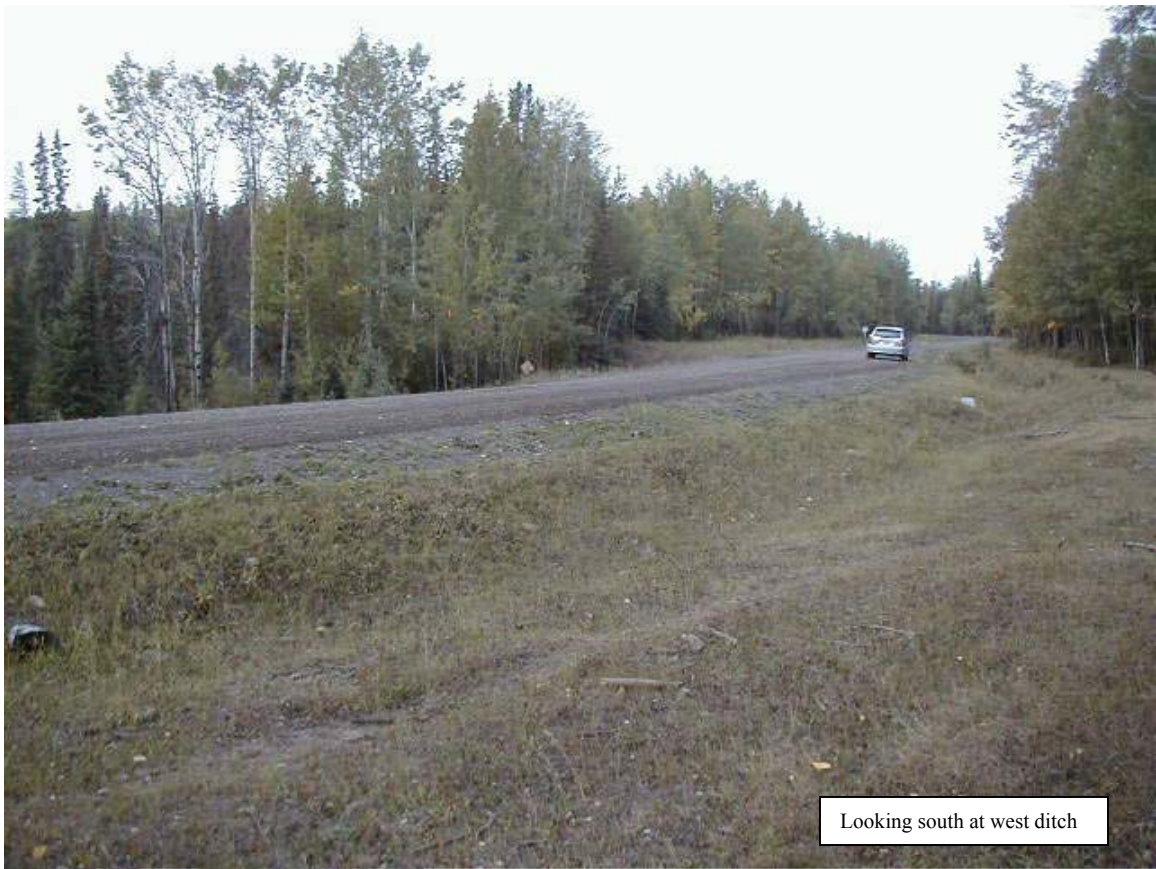




Looking north over second slide area about 30 m to the south. No culvert is present at this location but seepage was also observed.







Looking south at west ditch

