

**Narrow Riverbank Repair:**





Placing rock riprap for berm.



ALBERTA INFRASTRUCTURE & TRANSPORTATION CENTRAL REGION  
Geohazard Assessment Site C18  
H837:02 Riverbank Erosion



ALBERTA INFRASTRUCTURE & TRANSPORTATION CENTRAL REGION  
Geohazard Assessment Site C18  
H837:02 Riverbank Erosion



ALBERTA INFRASTRUCTURE & TRANSPORTATION CENTRAL REGION  
Geohazard Assessment Site C18  
H837:02 Riverbank Erosion





Crack (5 to 10 mm wide, 5 m long)  
in top lift of compacted gravel  
shoulder.

ALBERTA INFRASTRUCTURE & TRANSPORTATION CENTRAL REGION  
Geohazard Assessment Site C18  
H837:02 Riverbank Erosion

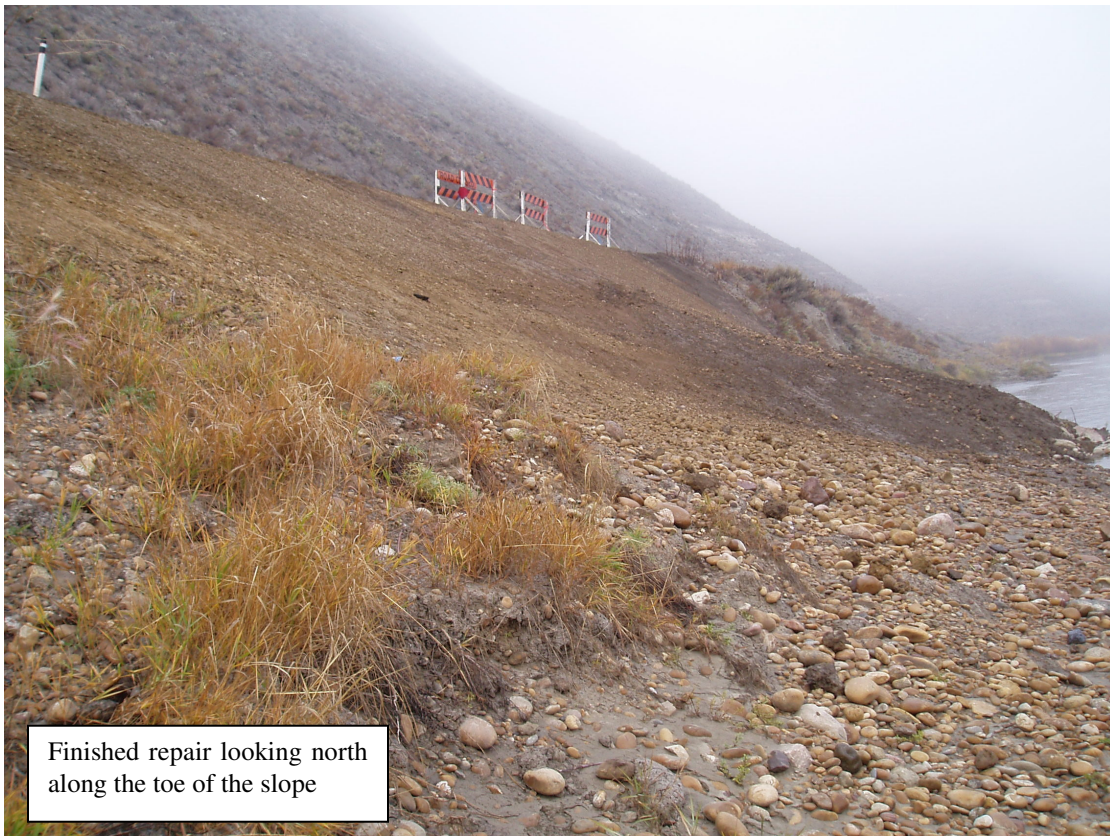


Finished repair looking north

ALBERTA INFRASTRUCTURE & TRANSPORTATION CENTRAL REGION  
Geohazard Assessment Site C18  
H837:02 Riverbank Erosion



Finished repair looking south



Finished repair looking north along the toe of the slope



Wide Riverbank Section





ALBERTA INFRASTRUCTURE & TRANSPORTATION CENTRAL REGION  
Geohazard Assessment Site C18  
H837:02 Riverbank Erosion





Cracks in highway surface at the south end of the repair; about 1 m in from edge of pavement

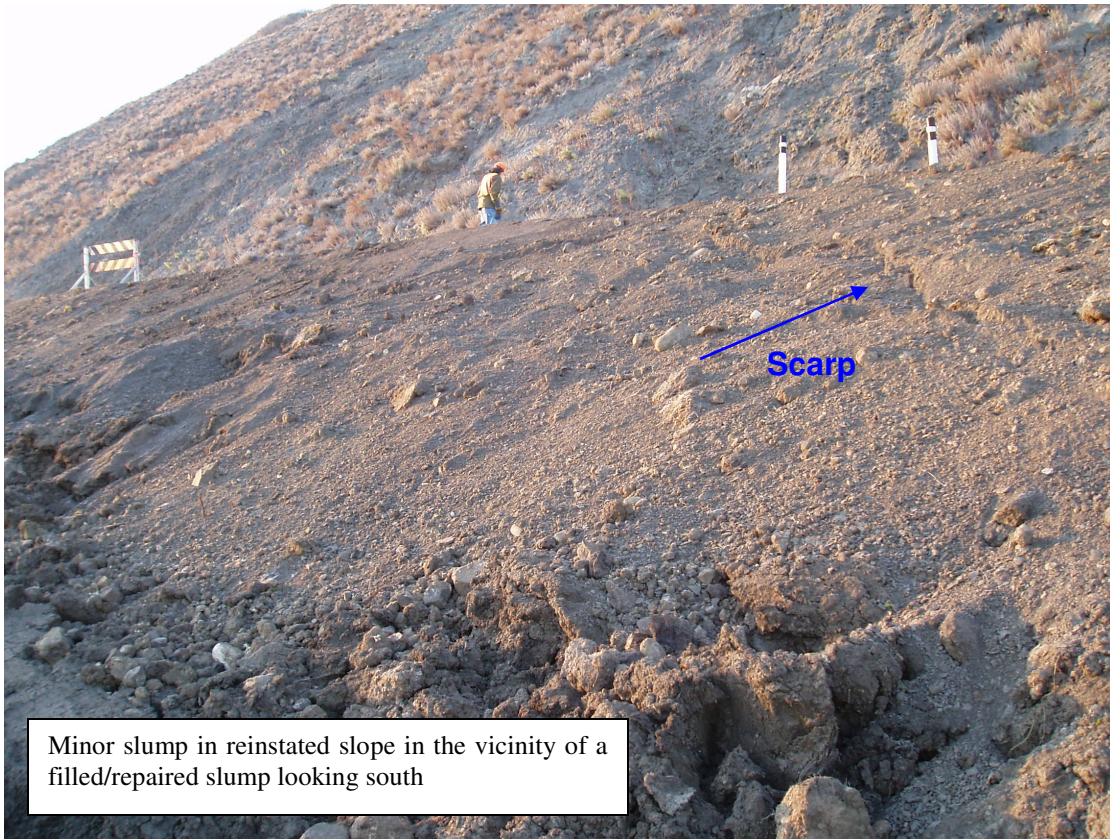
ALBERTA INFRASTRUCTURE & TRANSPORTATION CENTRAL REGION  
Geohazard Assessment Site C18  
H837:02 Riverbank Erosion



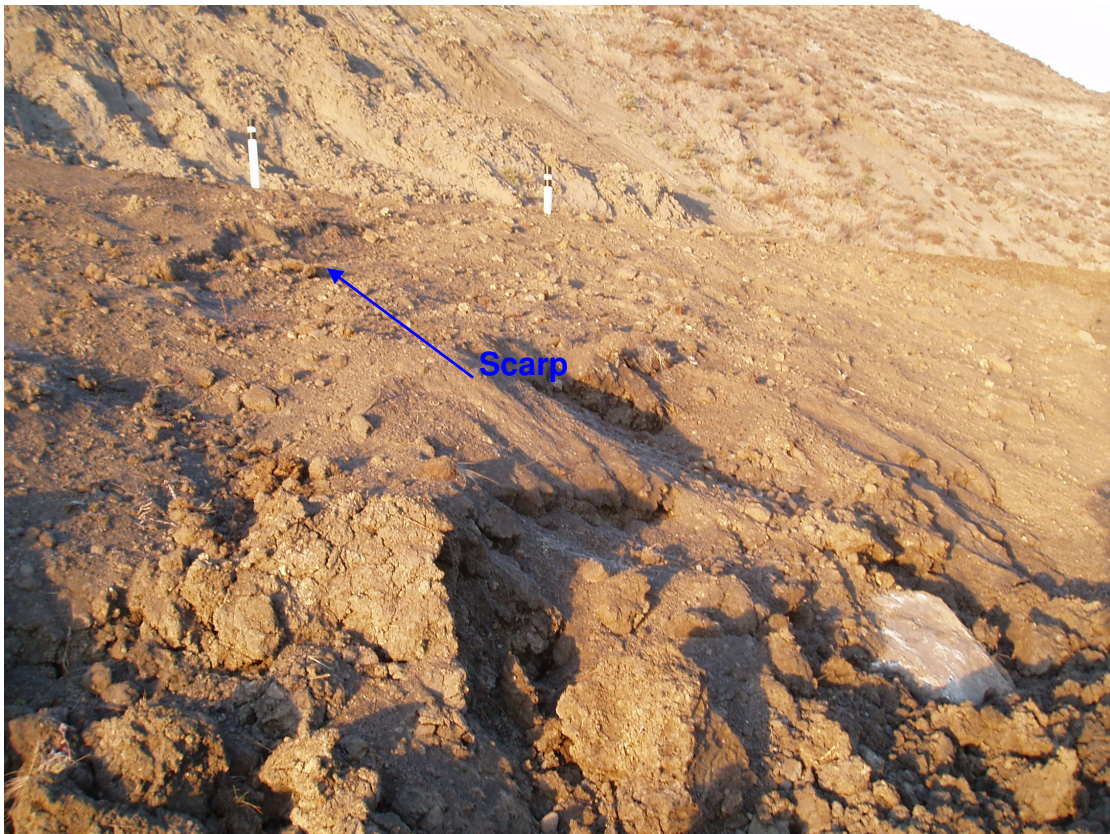
Reinstated slope (about 2H:1V to 3H:1V) looking north



Reinstated slope (about 2H:1V to 3H:1V) looking south



Minor slump in reinstated slope in the vicinity of a filled/repared slump looking south





Wet material uncovered during excavation for compacted gravel shoulder. Seepage appeared to be moving up through slope as the material became wetter over time.



Constructing 2 m wide compacted gravel shoulder and installing TRM looking south



ALBERTA INFRASTRUCTURE & TRANSPORTATION CENTRAL REGION  
Geohazard Assessment Site C18  
H837:02 Riverbank Erosion



Constructing 2 m wide compacted gravel shoulder and installing TRM looking north



Completed 2 m wide compacted gravel shoulder  
looking south



Willow stakes planted at toe of slope looking south



Completed repair looking north from toe of slope



Construction of rock-lined drainage channel at north end of repair area looking downstream



Completed drainage channel looking downstream



Completed drainage channel looking upstream