



Photo No. 1 – Standing water and ice inside MH#1

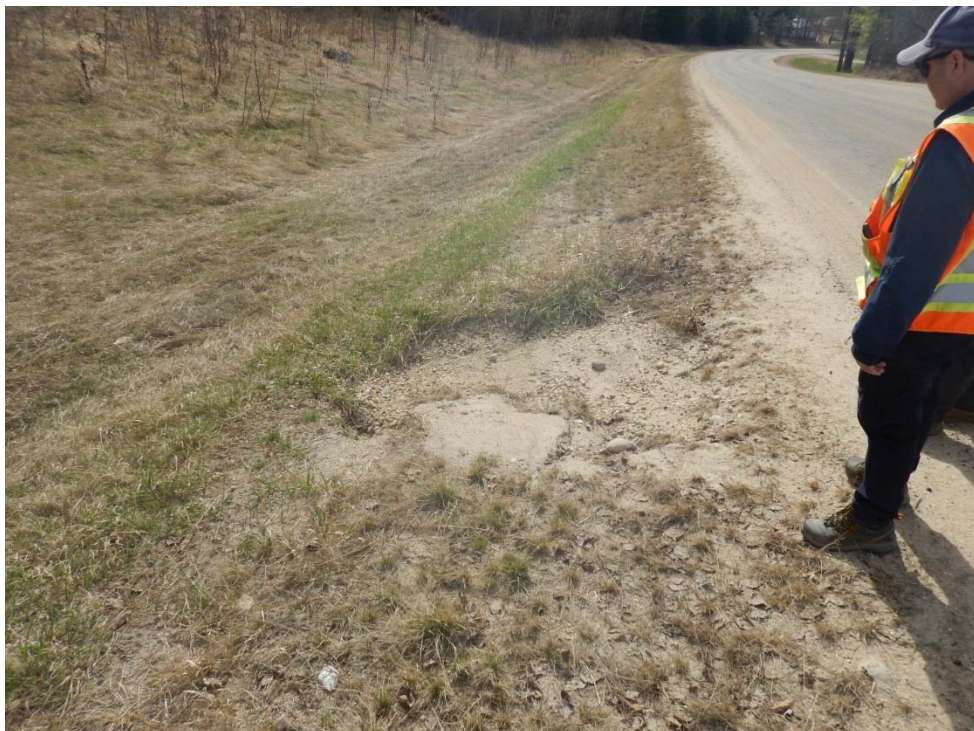


Photo No. 2 – Looking at the slight drop/settlement development near the edge of the road



Photo No. 3 – Looking north at multiple open longitudinal cracks in the highway surface between the MH#1 location and the Mid-Hill slope section



Photo No. 4 – Looking east at a vegetated scarp crack of a dormant slump within the highway backslope between the Mid-Hill and bottom of the hill slope sections





Photo No. 5 - Looking North at 2017 ACP Patch placed over the Mid-Hill Slope Section

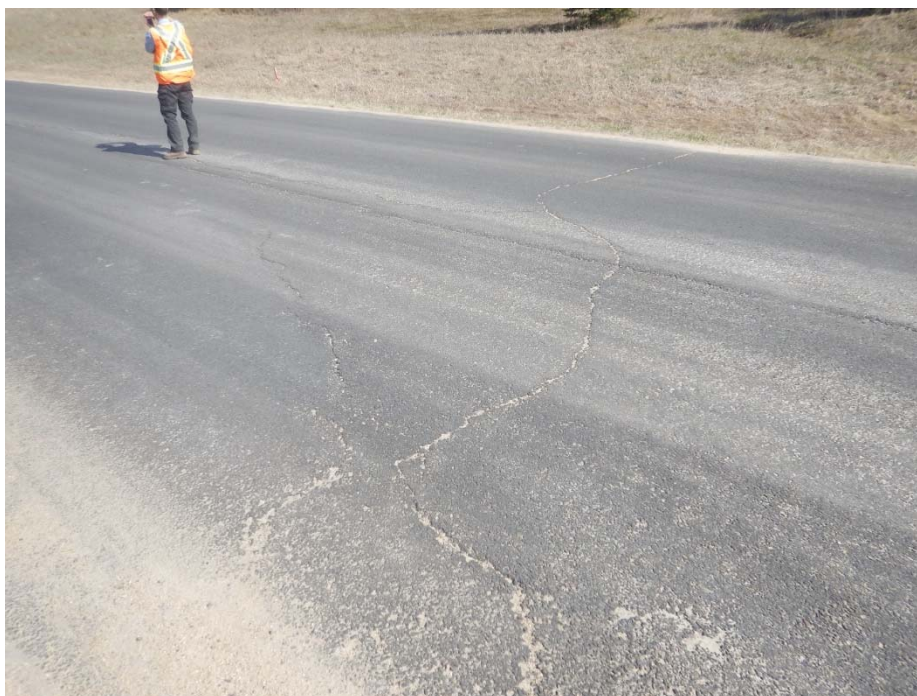


Photo No. 6 – Reflective diagonal crack after 2017 ACP patch at the southern limit of Mid-Hill Slope Section (looking northeast)



Photo No. 7 – Reflective Longitudinal Cracks at the Mid-Hill Slope Section (looking north)



Photo No. 8 – Reflective Diagonal Crack at the north end of the Mid-Hill Slope Section



Photo No. 9 – Looking south at the patch from the northern limit of the Mid-Hill Slope Section