

ADVANCED HYDRO TECHNICAL CONSIDERATIONS

Alberta

Overview

- Hydrotechnical Review
- Pier Scour Inspection
- RPW Inspection
- Case Study

2

Alberta

1

2

Hydrotechnical Review

- Area
- Shape
- Slope
- Channel
- Storage
- Density
- Vegetation
- Soil Type
- Initial Moisture



Alberta

3

3

Hydrotechnical Design Guidelines

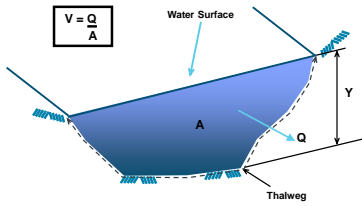
- Channel Capacity
- Historic Highwater Data
 - Drift, debris
 - Scars, erosion
 - Locals, photos
- Runoff Potential



Alberta

4

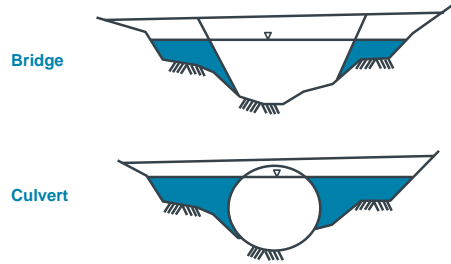
4



5

Alberta

5

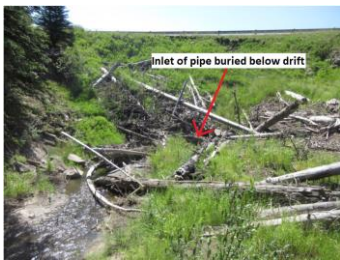


6

Alberta

6

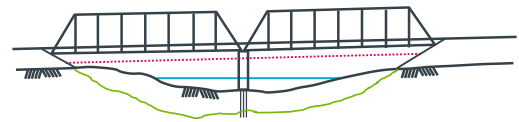
BF 79501 – Hwy 546 West of Diamond Valley



7

Alberta

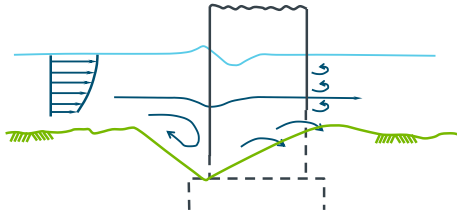
7



8

Alberta

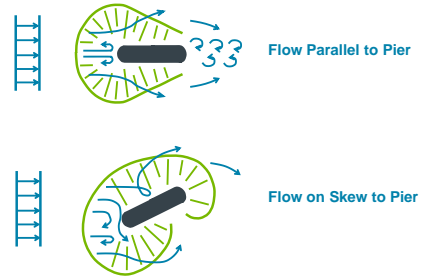
8



9

Alberta

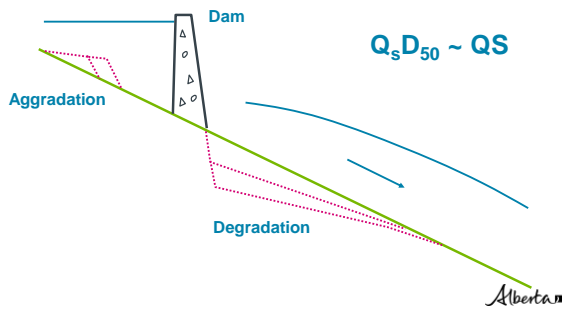
9



10

Alberta

10



11

Alberta

11



12

12



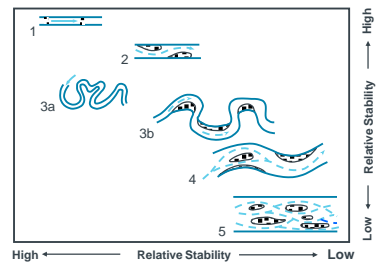
13



14



15



16

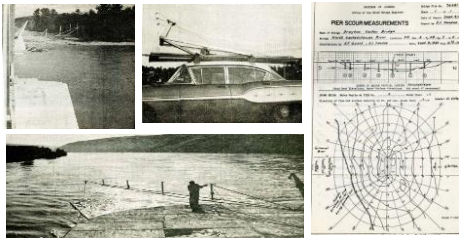


17



18

Pier Scour Survey



19



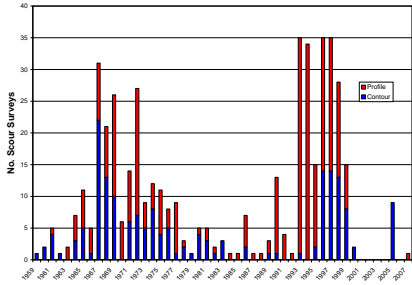
19



20



20



21

Alberta

21

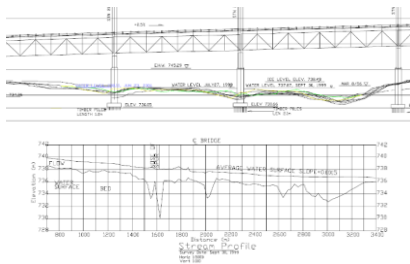


Priority	Number Of Structures	
	Initial	Latest
1	60	38
2	68	70
3	41	65

22

Alberta

22



23

Alberta

23

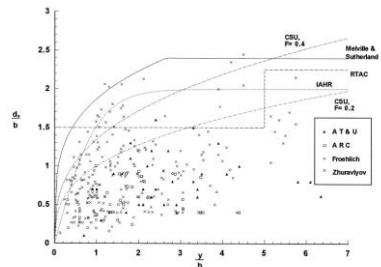


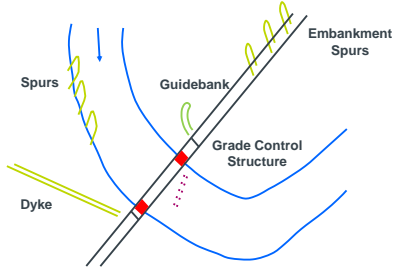
Figure 4.1 Comparison of Equations with Field Data

24

Alberta

24

Location of River Protection Works

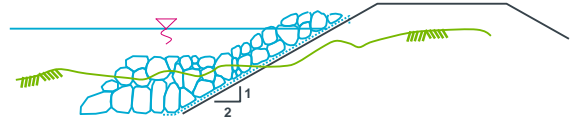


25

Alberta

25

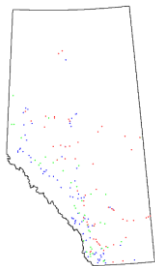
Typical Rock Riprap Section



26

Alberta

26



Priority	Description	No. Sites
1	Multi-channel Gravel Bed	93
2	Active Gravel Bed	48
3	Active Meander	66

27

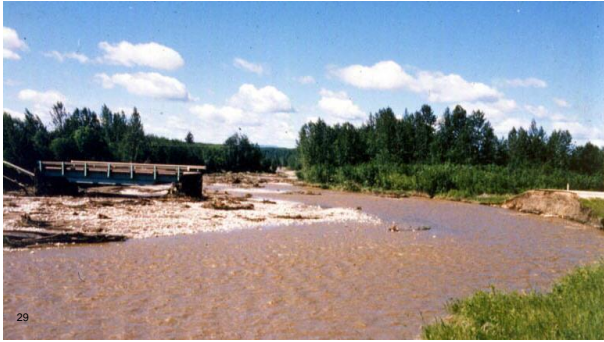
Alberta

27

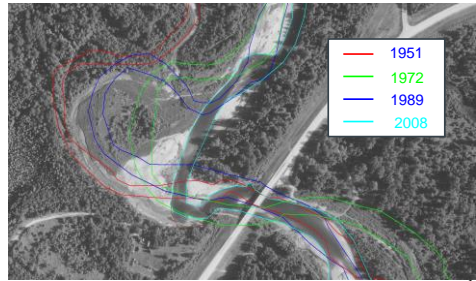


28

28



29



30

Alberta



31

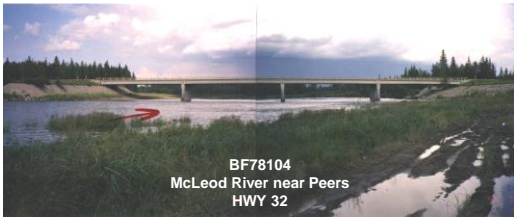
Alberta



32

Alberta

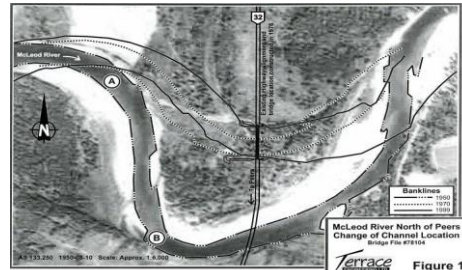
Case Study



33

Alberta

33



34

Alberta

34



35

Alberta

35



36

Alberta

36



37

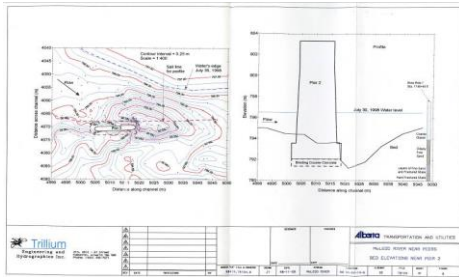
Alberta

37



38

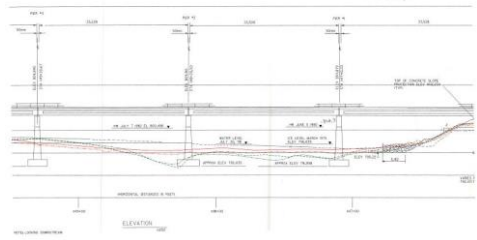
38



39

Alberta

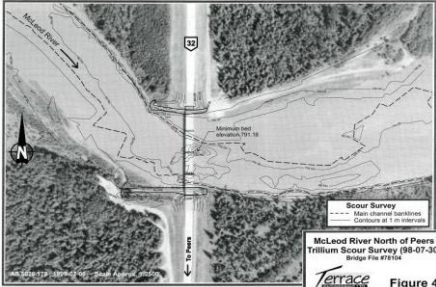
39



40

Alberta

40

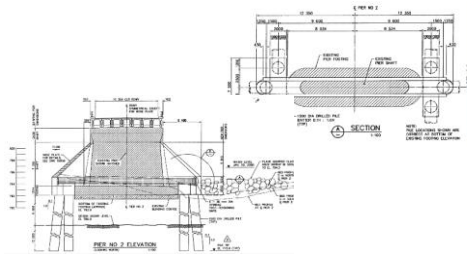


McLeod River North of Peers
Trillium Scour Survey (08-07-30)
Bridge File #7104

Terrace CONSULTANTS Figure 4 Alberta

41

41



42

Alberta

42



43

Alberta

43

Questions?

Alberta

44