

## Welcome

Class B Bridge Inspection Course  
Twin Atria, Edmonton, AB  
May 8 – 12, 2017



## Course Instructors

- Trainers
  - Garry Roberts
  - Randy Bredo
- Guest Lecturers
  - AT staff – Des Williamson, Matt Spratlin, Dave Besuyen.
  - Ted Belke, Abdul Waheed
- Refer to Course Schedule



## General Information

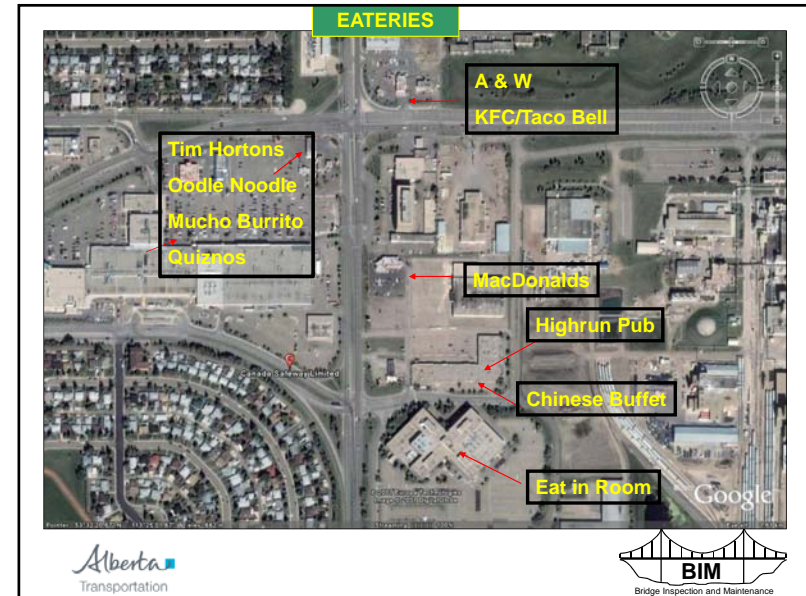
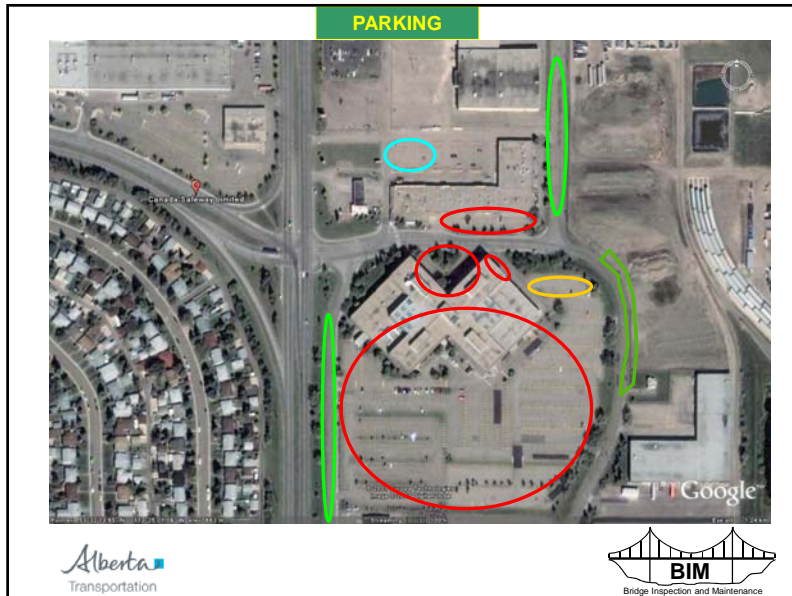
- Emergency Protocol
- Washrooms
- Room Access
  - Opens at 7:30 am
  - Locked at 5:00 pm
  - Open at lunch
  - Computers
- Smoking
  - At designated locations only - minimum 30 ft from building entrances



## General Information (cont'd)

- Registration and Payment
- Note Taking & Course Materials
- Course Evaluation must be completed





## Self Introduction

- Name
- Organization
- Present or Proposed Involvement with Bridges
- Fill out Name Tag/Placeholder

## BIM Inspector Training

**\*\*Alberta Transportation Requires All BIM course participants to self register for TIMS/BIS application for certification tracking purposes\*\***

[https://extranet.infra.gov.ab.ca/infra\\_login.html](https://extranet.infra.gov.ab.ca/infra_login.html)

[https://extranet.infra.gov.ab.ca/Self\\_Registration\\_Guide\\_to\\_Access\\_TIMS.pdf](https://extranet.infra.gov.ab.ca/Self_Registration_Guide_to_Access_TIMS.pdf)

## Course Schedule

- Monday – Friday
  - Start Time 8:00 am
  - Finish Time 4:15 - 4:45 pm
- Field Trip on Wednesday
  - Hard Hat, Traffic Vest, Hip Waders, Boots
  - Clip board, flashlight, hammer, tape measure
  - Transportation provided. Bring lunch.
- Preparation Requirements
- Questions allowed at anytime

## Quizzes

- Four Closed Book Exams:
  - Tuesday morning;
  - Thursday morning;
  - Friday morning; and
  - Friday afternoon
- Pass mark is 70%
- Marks posted daily – any objections to posted marks contact the instructor

## Courtesies

- Turn cell phone OFF/vibrate
  - no text messaging.
- No talking during exams – leave room and talk in hall once exam is completed.



## Course Objectives

- Introduction to AT's BIM system
- Learn bridge inspection terminology
- Learn inspection protocol and principles
- Introduction to bridge/culvert maintenance