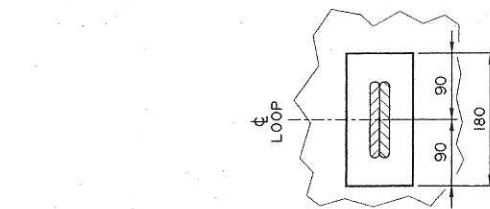
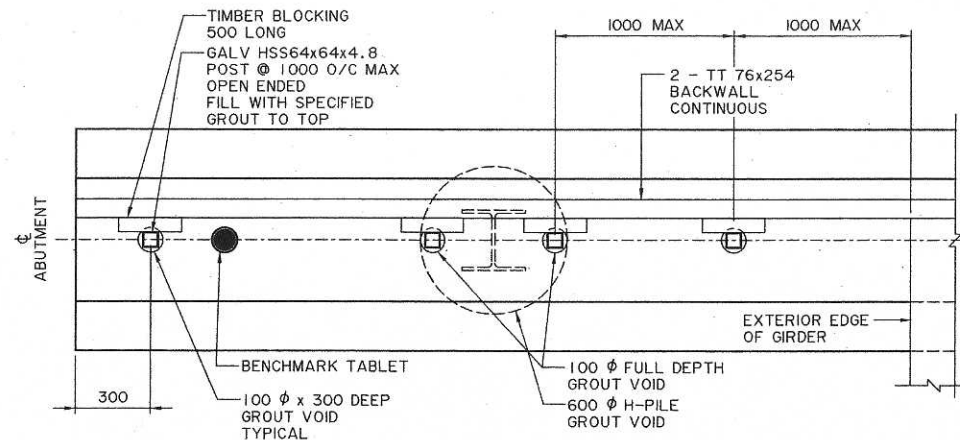


R LIFTING POINT DETAIL
S-1690-04 1:15



P LIFTING HOOK POCKET
NTS



S WING WALL DETAIL
S-1690-04 NTS

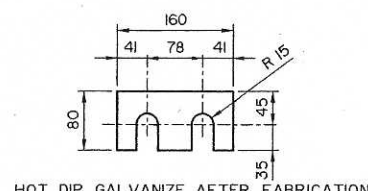
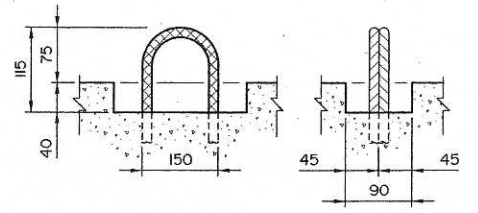
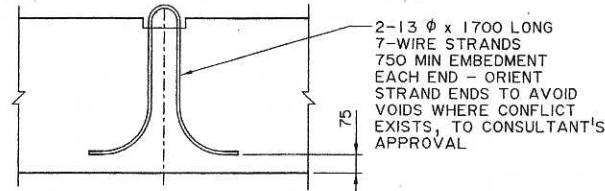
- CONSTRUCTION**
- ALL CONSTRUCTION WORK SHALL CONFORM TO THE CURRENT SPECIFICATIONS FOR BRIDGE CONSTRUCTION.
 - WELDING SHALL CONFORM TO SPECIFICATION SECTION 13.4.1 "FIELD WELDING OF STRUCTURAL MEMBERS".
 - PILES SHALL BE DRIVEN TO THE TIP ELEVATIONS SHOWN ON THE DRAWINGS, OR LOWER, TO ACHIEVE AT LEAST THE SPECIFIED MINIMUM BEARING CAPACITY. THE BEARING CAPACITIES SHALL BE ESTIMATED USING THE BEARING FORMULAS PRESENTED IN THE CURRENT SPECIFICATIONS FOR BRIDGE CONSTRUCTION.
 - AFTER PILE DRIVING OPERATIONS HAVE STARTED, THE CONSULTANT MAY REVISE THE REQUIRED PILE TIP ELEVATIONS, PROVIDED THAT THE MINIMUM SPECIFIED BEARING CAPACITY AND SPECIFIED MINIMUM PILE PENETRATION HAVE BEEN ACHIEVED.

ABUT PILES (kN)	MINIMUM BEARING CAPACITY (ALLOWABLE LOADS)				
	SPANS	PIER PILES (kN)			
		12m & 12.8m	10m	8m	6m
280	6m	500	440	400	360
310	8m	540	470	440	
350	10m	570	520		
410	12m & 12.8m	630			

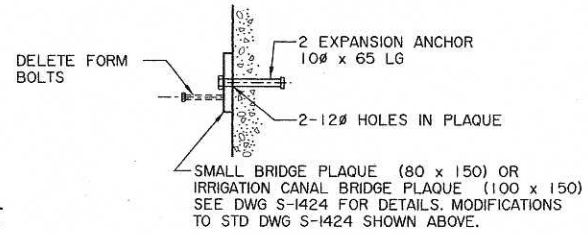
- PIER PILES SHALL PENETRATE AT LEAST 5 m BELOW STREAMBED
- PILE TOLERANCES AS PER SPECIFICATIONS FOR BRIDGE CONSTRUCTION EXCEPT THAT BOTH PIER AND ABUTMENT PILES SHALL NOT BE OUT OF SPECIFIED POSITION BY MORE THAN 25mm.
- ALL REINFORCEMENT SHALL HAVE A CLEAR CONCRETE COVER OF 55 mm UNLESS NOTED OTHERWISE.
- PILE CONCRETE SHALL BE CURED AT LEAST 12 HOURS BEFORE PLACING PIER CAP BLOCKOUT CONCRETE.
- ALL CORNERS SHALL HAVE A 20 mm CHAMFER OR FILLET UNLESS NOTED OTHERWISE.
- TREATED TIMBER (TT) SHALL BE HANDLED TO AVOID BRUISING, BREAKING OR PENETRATION OF OUTER FIBRES. LIFTING TOOLS SHALL BE APPLIED ONLY ON ENDS OF TT PIECES. ALL CUTS AND BRUISES SHALL BE CAREFULLY TRIMMED AND SHALL RECEIVE 2 APPLICATIONS OF CREOSOTE FOLLOWED BY A THOROUGH COVERING WITH HOT ROOFING PITCH.

- GIRDER INSTALLATION**
- REFER TO TYPE SC-510 GIRDER DRAWINGS (LATEST REVISION) AS APPLICABLE:

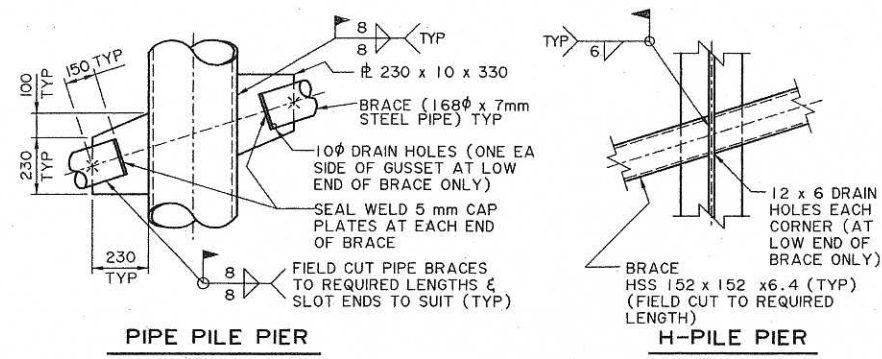
6 m S-1656 TO S-1657	10 m S-1660 TO S-1661
8 m S-1658 TO S-1659	12 m S-1662 TO S-1663
	12.8 m S-1678 TO S-1679
 - GIRDERS SHALL BE CONNECTED TOGETHER WITH 20mm ϕ A325 BOLT ASSEMBLIES, C/W DROP-IN WASHERS TO FILL GAP BETWEEN GIRDERS, TORQUED TO 400 Nm. GIRDERS SHALL NOT TOUCH EXCEPT THROUGH DROP-IN WASHERS. BOLTS AND WASHERS TO BE HOT-DIPPED GALVANIZED.
 - CONNECTOR AND LIFTING HOOK POCKETS SHALL BE FILLED WITH A DEPARTMENT APPROVED CONCRETE PATCHING MATERIAL.



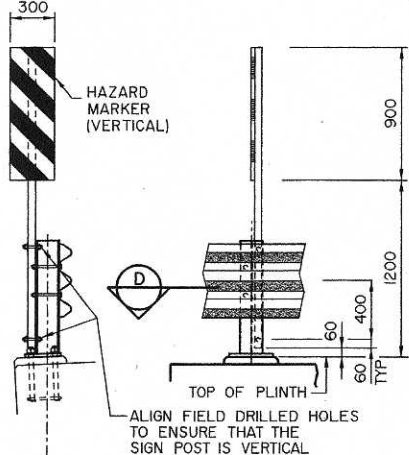
W DROP-IN WASHER
S-1690-04 1:5



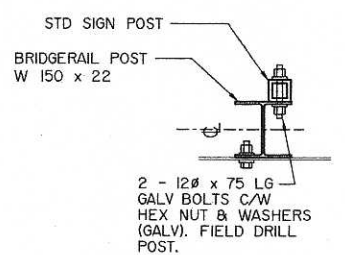
T BRIDGE PLAQUE
S-1690-04 1:5



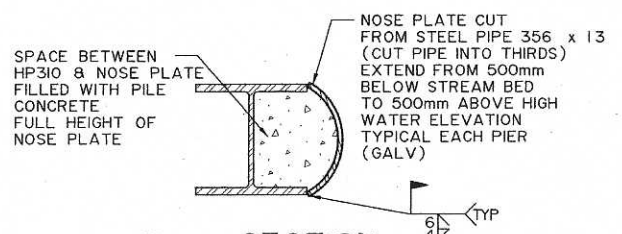
U BRACING DETAILS
S-1690-04 1:15



V HAZARD MARKER DETAILS
S-1690-04 (SHOWN AS FOR PL-1THRIE BEAM BRIDGERAIL) 1:25



D SECTION
1:10



E SECTION
S-1690-04 (FOR UPSTREAM HP 310x94 PILE ONLY) 1:10

WORK DRAWINGS S-1690-04, S-1691-04, S-1692-04, S-1693-04, S-1694-04 AND S-1695-04 TOGETHER WITH SITE SPECIFIC GENERAL LAYOUT

	PERMIT TO PRACTICE CH2M HILL, CANADA LIMITED Signature: <i>C. P. W.</i> Date: <u>January 27, 2005</u> PERMIT NUMBER: P 2558 The Association of Professional Engineers, Geologists and Geophysicists of Alberta	DESIGNER 	CHECKER 	RECOMMENDED DIRECTOR BRIDGE ENGINEERING <i>G.T. Blaker</i>	APPROVED EXECUTIVE DIRECTOR TECHNICAL STANDARDS BRANCH <i>Allan Ferguson</i> Feb 3/05	DEPARTMENT BAR CODE DATE SHEET DRAWING